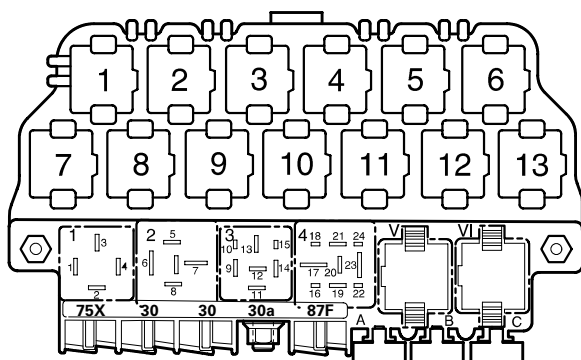


## Radio System,

from September 1997

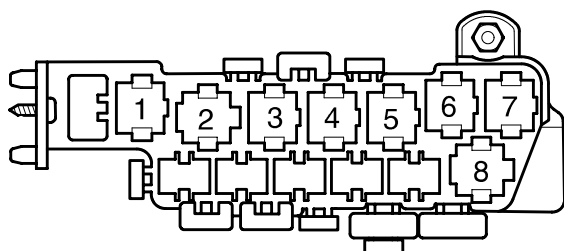
Deviate relay location and fuseplacements as well as the locations of multiple connectors see section "component locations".



97-20676

Relay location on the thirteenfold auxiliary relay panel, above relay panel:

Relay panel:



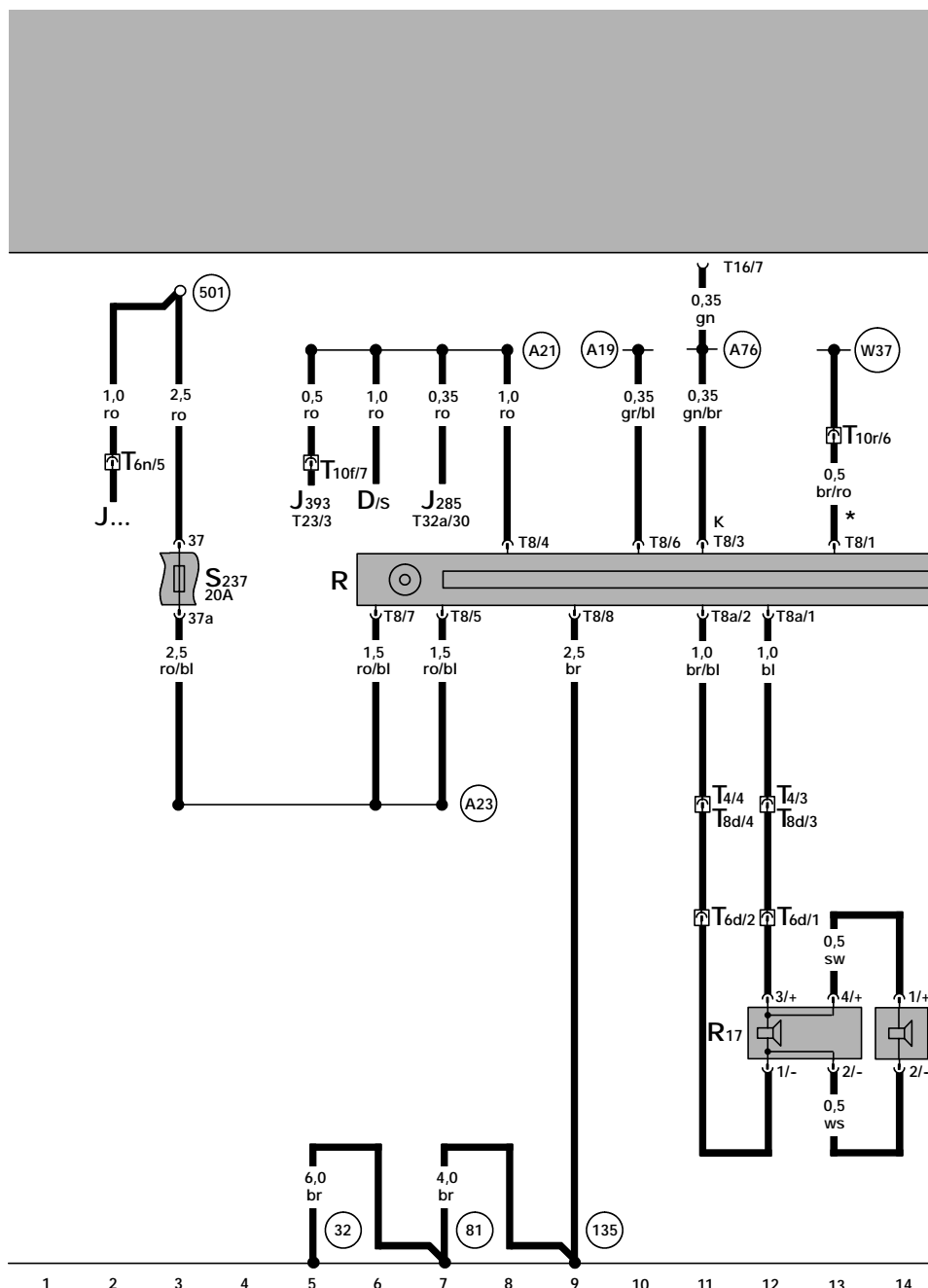
97-20515

Relay location on the eightfold auxiliary relay panel, behind relay panel:

### Fuse colors

30 A - green  
25 A - white  
20 A - yellow  
15 A - blue  
10 A - red  
7,5 A - brown  
5 A - beige

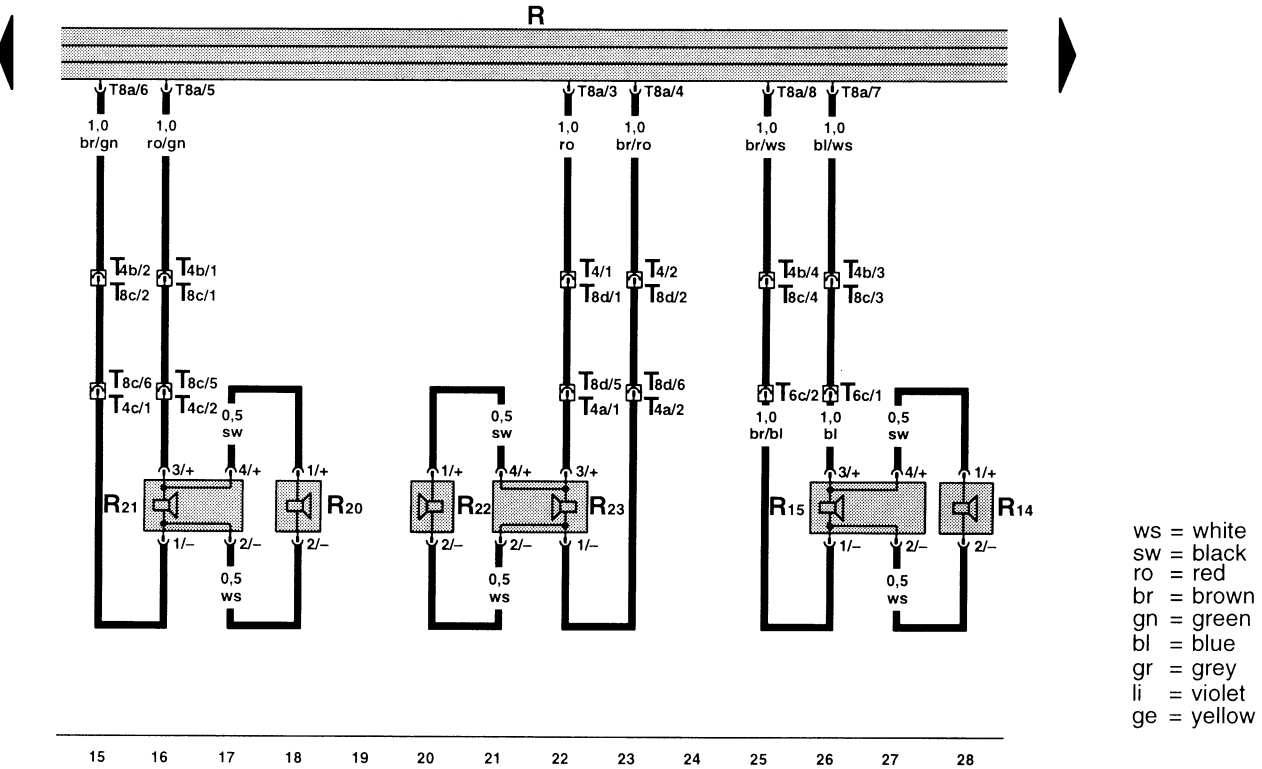
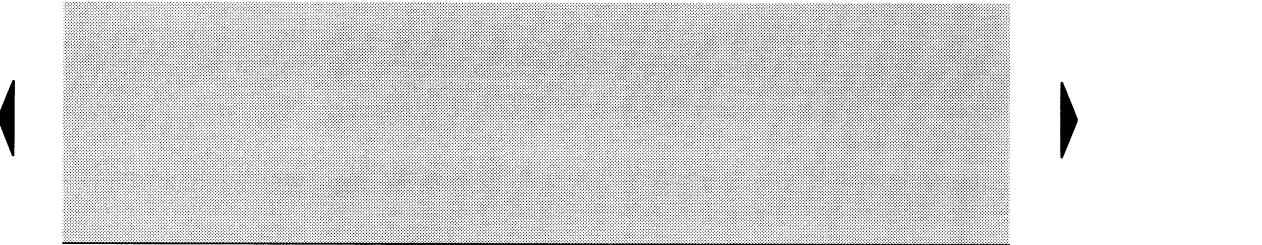
Note: Number in parentheses indicates production control number stamped on relay housing.



ws = white  
 sw = black  
 ro = red  
 br = brown  
 gn = green  
 bl = blue  
 gr = grey  
 li = violet  
 ge = yellow

- J... - Engine Control Module (ECM)  
 R - Radio  
 R16 - Right Rear Tweeter, in right rear door  
 R17 - Right Rear Woofer, in right rear door  
 S237 - Fuse 37 in fuse holder  
 T4 - 4-Pin Connector, black, connector station A-pillar, right  
 T6d - 6-Pin Connector, red, on B-pillar, right  
 T6n - 6-Pin Connector, red, on protective housing for control module  
 T8 - 8-Pin Connector, black, on radio  
 T8a - 8-Pin Connector, brown, on radio  
 T8d - 8-Pin Connector, black, connector station A-pillar, right  
 T10v - 10-Pin Connector, violett, connector station A-pillar, right  
 T16 - 16-Pin Connector, Data Link Connector (DLC), below instrument panel, left

- 32 - Ground connection, behind instrument panel, left  
 A76 - Connector (K-diagnosis wire), in instrument panel wiring harness  
 81 - Ground connection -1-, in instrument panel wiring harness  
 135 - Ground connection -2-, in instrument panel wiring harness  
 501 - Screw Connection -2- (30), on relay panel  
 A19 - wire connection (58d), in instrument panel wiring harness  
 A23 - wire connection (30al), in instrument panel wiring harness  
 W37 - Connector (alarm system), in wiring harness floor

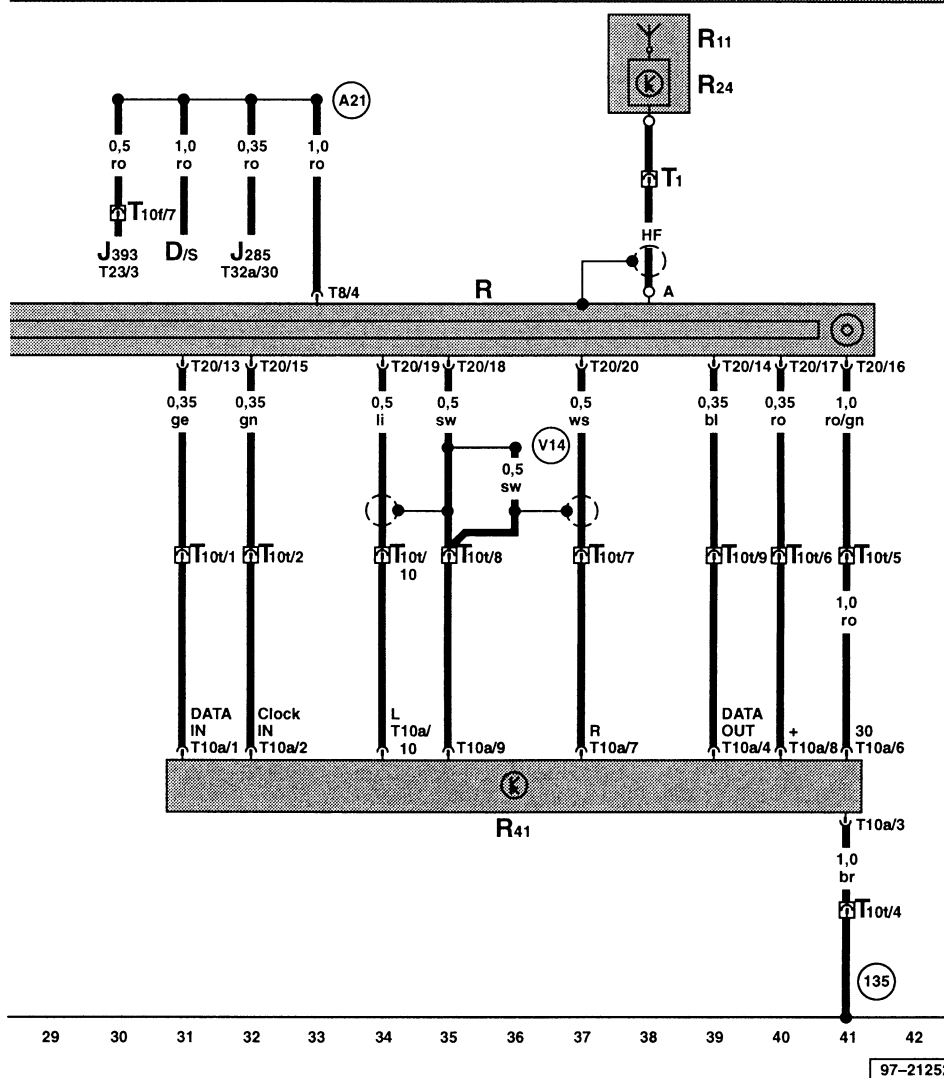


ws = white  
sw = black  
ro = red  
br = brown  
gn = green  
bl = blue  
gr = grey  
li = violet  
ge = yellow

- R – Radio
- R14 – Left Rear Tweeter, in left rear door
- R15 – Left Rear Woofer, in left rear door
- R20 – Left Front Tweeter, in driver's door
- R21 – Left Front Woofer, in driver's door
- R22 – Right Front Tweeter, in passenger's door
- R23 – Right Front Tweeter, in passenger's door
- T4 – 4-Pin Connector, black, connector station A-pillar, right
- T4a – 4-Pin Connector, black, connector station A-pillar, right
- T4b – 4-Pin Connector, black, connector station A-pillar, left
- T4c – 4-Pin Connector, black, connector station A-pillar, left
- T6c – 6-Pin Connector, red, on B-pillar, left
- T8a – 8-Pin Connector, brown, on radio

- T8c – 8-Pin Connector, black, connector station A-pillar, left
- T8d – 8-Pin Connector, black, connector station A-pillar, right

ws = white  
 sw = black  
 ro = red  
 br = brown  
 gn = green  
 bl = blue  
 gr = grey  
 li = violet  
 ge = yellow



- D – Ignition/Starter Switch  
 J285 – Control module with indicator unit in instrument panel insert  
 J393 – Central control module for comfort system  
 R – Radio  
 R11 – Antenna  
 R24 – Antenna Amplifier  
 R41 – CD Changer Unit  
 T1 – 1-Pin Connector, black, below console  
 T8 – 8-Pin Connector, black, on radio  
 T10a – 10-Pin Connector, red, on CD Changer Unit  
 T10f – 10-Pin Connector, blue, connector station A-pillar, left  
 T10t – 10-Pin Connector, red, connector station A-pillar, right  
 T20 – 20-Pin Connector, on radio

- T23 – 23-Pin Connector, on central control module for comfort system  
 T32a – 32-Pin Connector, blue, on instrument cluster

- (135) – Ground connection -2-, in instrument panel wiring harness  
 (A21) – wire connection (86s), in instrument panel wiring harness  
 (V14) – wire connection (shielding), in CD-changer wiring harness