

8th WCCT - Entries Section D: Endgame studies

Theme

In a position in the main line of a win or draw study where an unprotected white or black piece A is directly attacked, White or Black instantaneously (right on the following move) places another piece B (of the same colour as A) en-prise (again unprotected and directly attacked). This thematic move resulting in the two white or the two black pieces A and B hanging, must be a quiet one, i. e. not a check, nor a capture. A and B may be any piece except pawns.

Judges

Belarus, Finland, Georgia, Israel, Romania

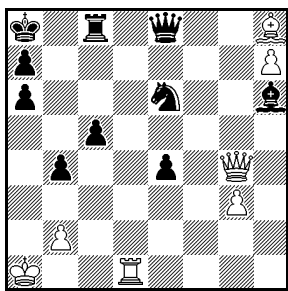
Reserve judge

Belgium

Notes by the Tourney Director

Sorted by (a) the position of white king, (b) the position of black king (if same position of white king), (c) random choice (if same position of both kings).

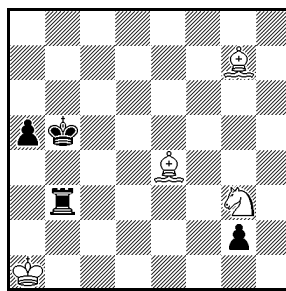
D/1



Win

7+10

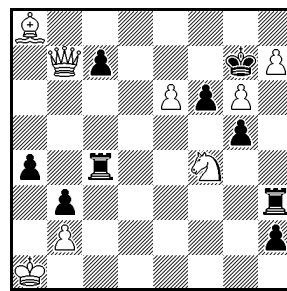
D/2



Win

4+4

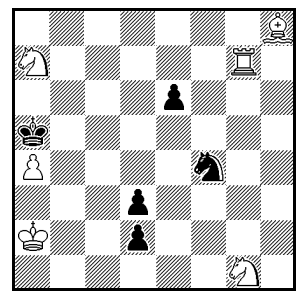
D/3



Win

8+9

D/4



Win

6+5

D/1

1.Le5! [2.h8=D+/D×e4+] **Lg7!** [a] 2.Td8! L×e5 [b] 3.D×e4+ Kb8 [c] 4.D×e5+ Kb7 5.T×e8 T×e8 6.h8=D

a) 1.– Dc6 2.Td6 ±; 1.– Df7 2.D×e4+ ±

b) 2.– T×d8 3.D×e4+ Td5 4.D×d5+ Dc6 5.D×c6#; 2.– D×d8 3.D×e4+ Dd5 4.D×d5+ Tc6 5.D×c6#; 2.– S×d8 3.D×c8#

c) 3.– Dc6 4.D×c6+ Kb8 5.T×c8#

D/2

1.Se2 Ta3+! [a] 2.Kb1! [b] g1=D+! [c] 3.S×g1 **Te3** 4.**Se2!** Kb4 5.Lf8+ Kc4 6.Lg2! [d] T×e2 7.Lf1 Kd3 8.Lh6

a) 1.– Te3 2.L×g2; 1.– Tg3 2.Ld4 Tg4 3.Lg1 T×e4 4.Sc3+; 1.– g1=D+ 2.S×g1 Te3 3.Lb1

b) 2.Kb2? Te3 3.L×g2 T×e2+; 3.Sd4+ (3.Sc3+ T×c3) Kb6! 4.L×g2 Tg3

c) 2.– Te3 3.L×g2 T×e2 4.Lf1; 2.– Tg3 3.Ld4

d) 6.Lb7? Tb3+

D/3

1.Dh1! [a] T×f4 2.e7 Te3 3.h8=D+ K×h8 4.D×h2+ Th4 **5.Dd2** [b] **Td4** [c] **6.Le4** and:

6.– Td×e4 7.e8=D+ T×e8 8.Dh2+ ±

6.– Te×e4 7.Dh2+ Th4 8.e8=D+ ±

Two thematic moves combined with Plachutta interference. Bristol key.

a) 1.Se2? Tc2 ±

b) 5.Df2? Tf4 6.Dh2+ Th4 loss of time

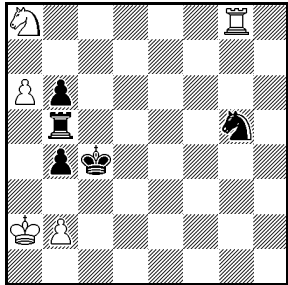
c) 5.– Tf4 6.Lf3 ±

D/4

1.Tg5+ e5! [a] 2.T×e5+ Ka6 [c] 3.Ta5+! K×a5 4.Lc3+ K×a4 5.L×d2 **Sh3!** **6.Sb5!** [d] S×g1 [e] 7.Sc3+ Kb4 8.Se2+ 9.S×g1 ±

- a) 1.- K×a4 2.Lc3 [b)] Sd5 3.L×d2 ±; 1.- Kb6 2.Tb5+ 3.Tb1 ±
 b) 2.Ta5+? Ka5 3.Lc3+ Kb6! 4.L×d2 Sd5! 5.Sc8+ Kc7 6.Sa7 Kb6 =
 c) 2.- Ka4 3.Sc6 with mate
 d) 6.S×h3? stalemate. That is the reason for 1.- e5!; 6.Sf3? Sg1! 7.Sf~ Sf3 =
 e) 6.- K×b5 7.S×h3 ±

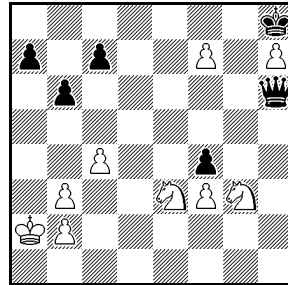
D/5



Win

5+5

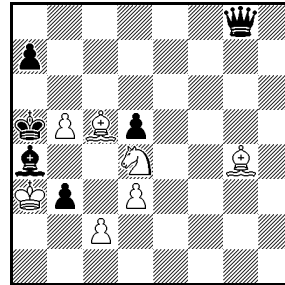
D/6



Win

9+6

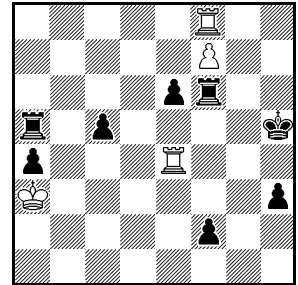
D/7



Draw

7+6

D/8



Draw

4+8

D/5

1.a7! [a] Ta5+ [b] 2.Kb1 and now two main variations: 2.- T×a7 (A) and 2.- Te5 (B)

(A) First variation: 2.- T×a7 [c] 3.S×b6+ Kb3! [d] 4.Te8! (thr. 5.Te3#) [e] Se6! [f] 5.T×e6! **Te7!** **6.Sa4!** (6.T×e7? stalemate; 6.Sd7? T×d7 =) Tc7 [g] 7.Ta6 (7.Sb6? Te7) Th7 8.Sc5+ Kc4 9.Tc6! [h] Kb5 [i] 10.Tc8 ±

(B) Second variation: 2.- Te5! 3.Kc2! [j] b3+ 4.Kd1! [k] Sf3! 5.S×b6+ **Kb5** [l] **6.Tg5!** [m] K×b6 [n] 7.T×e5 ± e.g. 7.- K×a7 (7.- S×e5 8.a8=D) 8.Te3 Sd4 9.Td3 ...

- a) 1.Tc8+? Kd3! (1.- Kd4? 2.Sc7 Te5+? 3.a7 Ta5+ 4.Kb3 T×a7 5.Sb5+ ±) 2.Sc7 Te5! (2.- Ta5+? 3.Kb3! Sf3 4.Td8+! Ke4 5.Td6 ±) 3.Kb1 (3.a7 Ta5+ 4.Kb3 T×a7 =; 3.Kb3 Se6! 4.a7 Sd4+! 5.Ka4 Ta5+ =) Se6! (3.- Ta5? 4.Td8+ Ke4 5.Td5! T×a6 6.T×g5 ±) 4.a7 S×c7 5.T×c7 Ta5! =; 1.S×b6+? T×b6 =; 1.Kb1? Te5 (or 1.- Tf5) 2.S×b6+ Kb3 =
- b) 1.- b3+ 2.Kb1 Te5 3.S×b6+ (3.Tc8+? Kb4 4.S×b6 Sf3 5.Tc4+ Kb5 6.Tc1 K×b6 7.a8=D Sd2+ 8.Ka1 Ta5+ 9.D×a5 K×a5 =) Kb4 4.Sd5+! T×d5 5.Tb8+ Kc4 6.Tc8+ Kb4 7.a8=D ±
- c) 2.- Kb3 3.Te8! (3.S×b6? Te5! 4.Kc1 Te1+ 5.Kd2 Sf3+ 6.Kd3 Se5+ 7.Kd2 Sf3+ 8.Kd3 Se5+ 9.Kd4 Sc6+ 10.Kd5 S×a7 =) T×a7 4.S×b6 entering the main variation
- d) 3.- Kb5 4.Sc8! ±; 3.- Kd4 4.T×g5 ±
- e) 4.T×g5? Tg7! 5.T×g7 stalemate; 4.Td8? Se4! 5.Td3+ Sc3+ 6.b×c3 b×c3 =
- f) 4.- Se4? 5.T×e4 Te7 6.T×b4+! (or 6.Sc4!) K×b4 7.Sd5+ ±
- g) 6.- T×e6 7.Sc5+; 6.- Th7 7.Sc5+ Kc4 8.Tc6! ± (8.Te5? b3! 9.Kc1 Kd4! =; 8.Se4? Th1+! 9.Kc2 b3+)
- h) 9.Ta5? b3! =; 9.Se4? Th1+! 10.Kc2 b3+ 11.Kd2 Th2+ 12.Kc1 Th1+ =
- i) 9.- Th1+ 10.Ka2 b3+ 11.S×b3+ ± (11.Ka3? Ta1+)
- j) 3.Kc1? Te1+ 4.Kc2 b3+ 5.Kd2 Sf3#; 3.S×b6+? Kb3! 4.Kc1 Te1+ 5.Kd2 Sf3+ 6.Kd3 Se5+ 7.Kd2 Sf3+ 8.Kd3 Se5+ 9.Kd4 Sc6+ 10.Kd5 S×a7 =; 3.Tc8+? Kb3! =; 3.Tf8? Kb3! 4.Tf1 Se4! =; 3.T×g5? T×g5 4.S×b6+ Kb3! =
- k) 4.Kd2? Sf3+ 5.Kd1 Te1#; 4.Kc1?? Te1+ 5.Kd2 Sf3#
- l) 5.- Kd3 6.Td8+! ± (6.Tg1? Ta5! =)
- m) **6.Tg1!** Te8! 7.a8=D T×a8 8.S×a8 S×g1 =; 6.a8=D?? Te1#
- n) 6.- T×g5 7.a8=D±; 6.- S×g5 7.a8=D±

D/6

1.Sg4! Dg7! [a] 2.Se4! [b] D×f7 [c] 3.Sg5! [d] **Df5!** [e] **4.Se5!** Kg7! 5.Ka1! [f] c6! 6.Ka2! D×g5 [g] 7.h8=D! K×h8 8.Sf7+ Kg7 9.S×g5 ±

- a) 1.– Df8 2.Se5 K×h7 3.Sh5 Dc5 4.Sf6+ Kg7 5.Sd7 ±; 1.– Dd6 2.Se4 Db4 3.Se5 Kh7 4.Sd7 Da5+ 5.Kb1 De1+ 6.Kc2 De2+ 7.Sd2 ±
- b) 2.Se5? f×g3 3.Sg6+ K×h7 4.f8=D D×f8 5.Sf8 Kg8 6.Se6 d2 ≠; 2.Sh5? D×f7 3.Shf6 a5 4.Kb1 De6 5.Ka1 Kg7 6.Ka2 De2 7.Sh6 Dh2 8.Sg4 Dh1 ≠
- c) 2.– K×h7 3.Se5 Kh6 4.Sf6! Kg5 5.Sfd7 ±
- d) 3.Se5? **Df5?** 4.Sg5 Kg7 5.Ka1! ±; 3.– Dh7! 4.Sg5 Df5 ≠
- e) 3.– **Dg6!** 4.Sh6? D×h6! 5.Sf7+ K×h7 6.S×h6 K×h6 ≠; 3.– Dg6 4.Se5! ±
- f) 5.– Sef7? Da5+! 6.Kb1 De1+ 7.Kc2 De2 8.Ka3 De3 9.Kc2=; 5.Ka3? Db1! 6.b4 Da1+ 7.Kb3 Dd1+ 8.Kc3 De1+ 9.Kd4 c6 10.Kd3=; 5.b4? Dc2! 6.Ka3 c5 7.b×c5 b5 8.Ka2 Da4 9.Kb1 Dd1=; 5.c5? Dc8! 6.Sef7 Da6+ 7.Kb1 Dd3 8.Kc1 De1+ 9.Kc2 De2+ 10.Kc3 De3=
- g) 6.– Kf6 7.h8=D K×h5 8.Dg7 ±

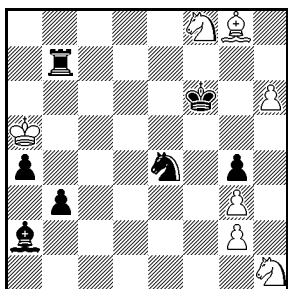
D/7

- 1.c4! (2.Sc6#) d×c4 2.d×c4 D×c4 3.Sc6+ **K×b5** 4.Le2! D×e2 5.Sd4+ K×c5 6.S×e2 Kc4 7.Sc1 Kc3 8.S×b3 L×b3 stalemate
- 4.– K×c5 5.L×c4 K×c4 5.Sa5! Kc3 6.S×b3 L×b3 stalemate
- 4.– K×c6 5.L×c4 K×c5 6.L×b3 =

D/8

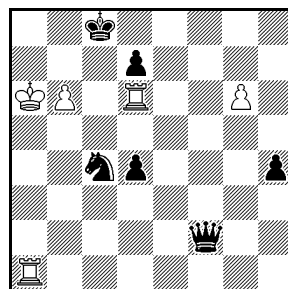
- 1.Th8+ Kg5 2.f8=D [a)] T×f8 3.T×f8 h2 4.Te5+ Kg4 5.Te4+ Kg5 [b)] 6.Te5+ Kg6 7.T×e6+ **Kg7** 8.Th6 K×h6 9.T×f2 h1=D 10.Th2+ D×h2 stalemate
- 8.– K×f8 9.T×h2 f1=D 10.Tf2+ D×f2 stalemate
- a) 2.Tg8+? Kf5 3.f8=D T×f8 4.T×f8+ K×e4 ≠
- b) 5.– Kg3 6.T×e6 (6.Te3+ Kg2 ≠) c4 (6.– Kg2 7.Tg6+ =) 7.Tg6+ Kh4 8.Tgf6 h1=D 9.Th6+ =

D/9



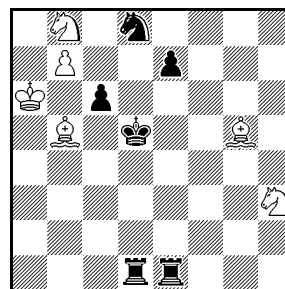
Draw 7+7

D/10



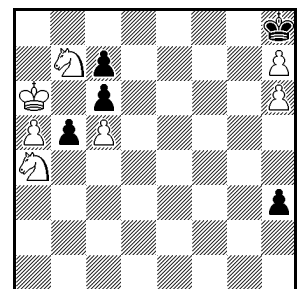
Win 5+6

D/11



Draw 6+6

D/12



Win 7+5

D/9

- 1.h7 T×h7 [a)] 2.S×h7+ [b)] **Kg7** 3.Sg5! [c)] **b2!** [e)] 4.L×a2 **Sc3** 5.**Se4!** S×a2 6.Sd2 Sc3 7.Kb4 =

- a) 1.– Kg7 2.Sg6 =
- b) 2.L×h7? b2 3.L×e4 Ld5 4.Lb1 (or 4.Sd7+ Kg7 ≠) a3 5.Sf2 a2 6.L×a2 L×a2 ≠
- c) 3.Sf6? Sc3 4.Sd5 [d)] Sd1 5.Sb6 K×g8 6.S×a4 b2 7.S×b2 S×b2 ≠
- d) 4.Kb4 b2 5.Lh7 Sd1 ≠
- e) 3.– Sc3 4.Kb4 K×g8 (4.– b2 5.Lh7 =) 5.K×c3 a3 6.Se4 b2 7.Sd2 =

D/10

- 1.g7 Dg2 [a)] 2.Tf6! [b)] **D×g7** [c)] 3.**Tg1!** Dh8 4.Tfg6 [d)] S×b6 5.K×b6 [e)] Dd8+ 6.Ka6 Kc7 [f)] 7.Tc1+ Kb8 8.Tb6+ Ka8 9.Ta1! Dg5 10.Ta5! Dd2 11.Kb5+ D×a5+ 12.K×a5

In post-key play, thematic rook sacrifice comes after black queen's attack on wRf6; in the try 2.Th6?, after black queen's attack on wRh6.

- a) 1.– Df7 2.Tg1 S×b6 3.g8=D

b) 2.Th6? D×g7 3.Tg1 Df8!

c) 2.– Da8+ 3.Kb5 Dd5+ 4.Kb4 S×b6 5.T×b6 Kc7 6.Tg6 Dg8 (6.– Db7+ 7.Kc4) 7.Ta7+ Kb8 8.T×d7 Kc8 9.Ta7 Kb8 10.Te7

d) 4.Tgf1? S×b6 5.K×b6 Dd8+ 6.Ka6 De7 7.Tc1+ Kd8!

e) 5.Tg8+? D×g8 6.T×g8+ Kc7

f) 6.– De7 7.Tc1+ Kd8 8.Tg8+

D/11

1.Ld3! [a] T×d3 [b] 2.Sf4+ Kd6 [c] 3.S×d3 Ta1+ 4.Kb6 Tb1+ 5.Ka6 T×b7 [d] 6.Sb4! [e] T×b8 [f] 7.Lf4+ [g] e5 [h]

8.L×e5+! K×e5 9.S×c6+! S×c6 stalemate

6.– T×b4 7.L×e7+ K×e7 8.S×c6+ S×c6 stalemate

a) 1.Sf4+? Kd6 2.Ld3 Ta1+ 3.Kb6 Ta3+; 2.Sd3 c×b5 3.S×e1 T×e1 ♯; 2.S×c6 S×c6 3.Kb6 Tb1 4.Sd3 T×b5 5.K×b5 Tb1+ 6.Ka6 e5 7.S×e5 K×e5 ♯; 1.S×c6? Kc5 2.Sa5 Ta1 3.Ld2 Te6+ 4.Ka7 S×b7 ♯; 1.Le2? T×e2 2.Sf4+ Kc5 3.S×e2 Ta1#

b) 1.– Ta1+ 2.Kb6 Ta3 3.Sd7 Tb3+ 4.Kc7 S×b7 5.Sf4+ =; 1.– Kd6 2.Sf2 (2.Sf4? Ta1+ 3.Kb6 Ta3 ♯) Ta1+ 3.Kb6 Teb1+ 4.L×b1 T×b1+ 5.Ka6 Tb4 (5.– T×b7 6.Se4+ Kc7 7.Le7 =) 6.Sd3 T×b7 7.Sb4! =

c) 2.– Kc4 3.S×d3 K×d3 4.Sd7 Ta1+ 5.Kb6 Tb1+ 6.Kc7 S×b7 7.L×e7 Sa5 8.Lc5 Tb7+ 9.Kd6 Tb5 10.Lb6 =

d) 5.– S×b7 6.L×e7+ K×e7 7.S×c6+ Kd7 8.Scb4 =

e) 6.Le3? Tb3 7.Lf4+ Kd5 ♯

f) 6.– c5 7.S4c6 S×c6 8.K×b7 S×b8 9.K×b8 c4 10.Lc1 e5 11.Lb2 e4 12.Kb7 Kc5 13.Lc3 =

g) 7.L×e7+ Kc7 ♯

h) 7.– Kc5 8.Sd3+ Kd4 9.L×b8 K×d3 10.Kb6 Kc4 11.Kc7 e5 12.K×d8 Kd5 13.Ke7 c5 14.Kf6 e4 15.Kf5 Kd4 16.Lg3 =; 10.– Kd4 11.Lc7 Se6 12.Lg3 c5 13.Lh4 Sf4 14.Lf2+ Kd5 15.L×c5 =

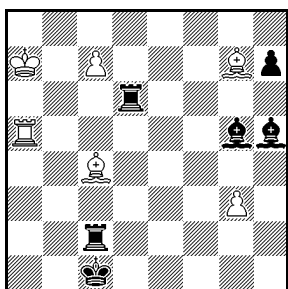
D/12

1.Sc3 h2 2.Se4 h1=D 3.Sg5 Dd5 4.Sd8! [5.Sdf7#] D×d8 [a] 5.Sf7+ K×h7 6.S×d8 b4 7.Sf7! [b] b3 8.Sg5+ K×h6 9.Se4 ± (9.– b2 10.Sc3 ...)

a) 4.– D×g5 5.Sf7+ K×h7 6.S×g5+! K×h6 7.Se4 ±

b) 7.S×c6 or 7.Se6? b3 and the white knight is too late to prevent the promotion

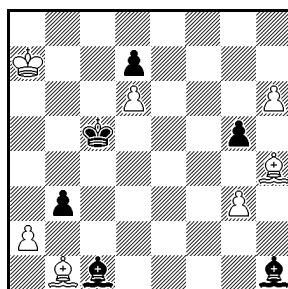
D/13



Draw

6+6

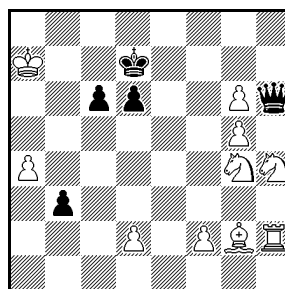
D/14



Draw

7+6

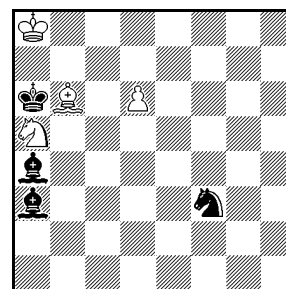
D/15



Win, Black to move

10+5

D/16



Draw

4+4

D/13

1.c8=D [a] Le3+ 2.Kb8 [b] Tb6+ 3.Db7 T×b7+ 4.K×b7 Lf3+ 5.Ld5 Ta2! 6.Lh6! [c] L×d5+ [d] 7.T×d5 L×h6 8.Th5! Le3! 9.Th1+! [e] Kc2 10.Th2+ Kb3 11.T×a2 K×a2 12.Kc6 Kb3 13.Kd5 Kc3 14.Ke4 Kd2 15.Kf3 =

a) 1.T×g5? T×c4 2.Le5 Ta4+ 3.Kb8 Tb6+ ♯

b) 2.Tc5? T×c4 ♯; 2.Ka8? Lf3+ ♯

c) 6.T×a2 L×d5+ ±

d) 6.- T×a5 7.L×e3+ Kc2 8.L×f3 Ta3 9.Le4+ =

e) 9.T×h7? Ta7+ ♯

Black and White theme.

D/14

1.h7 [a] Lb2 2.L×g5 [threatens 3.a×b3 ±] **Le4! 3.Lc1!** [b] Lh8! 4.La3+ **Kb5 5.Lb2!** b×a2 [c] 6.Ld3+! L×d3 7.L×h8 L×h7 [8.- Lf5 ♯] 8.g4 =

a) 1.a×b3? g×h4 2.h7 Lb2 3.g×h4 K×d6

b) 3.L×e4? b×a2 ♯; 3.Le3+? K×d6 4.Lf4+ Ke6 ♯

c) 5.- L×b2 6.a4+! ±

D/15

1.- D×g5 2.Sf5! D×f5 [a] 3.Th5! [b] Df4 [c] **4.Le4!** b2 5.g7 D×e4 [d] 6.Sf6+ Kc7 7.S×e4 b1=D 8.Tb5 c×b5 9.g8=D ±
3.- D×g6 **4.Le4!** [e] D×g4 [f] **5.Lf5** D×f5 6.T×f5 b2 7.Tf7+ ±

a) 2.- D×g4 3.Th7+ Kd8 4.Tb7 D×g6 5.Tb8+ Kc7 6.Tc8+ Kd7 7.L×c6+ K×c8 8.Se7+ ±

b) 3.Th7+? Kd8 4.Th8+ Kc7 =

c) 3.- D×h5 4.Sf6; 3.- D×g4 Lh3

d) 5.- b1=D 6.g8=D Db×e4 7.Th7+

e) 4.Lh3? Kc7 5.Th8 b2 6.Sf6 d5! =

f) 4.- D×e4/D×h5 5.Sf6+

D/16

1.Sc4! **Se5** [a] 2.S×e5 [b] L×d6 **3.La5** Zz. [c] Le8 4.Lb6 Zz. [d] Lb5 5.Ld8 Zz. La4 [e] 6.La5 Lc2 7.Sc6 Lf5 8.Ld8 [f]
Le4 9.Lc7 L×c7 stalemate

a) 1.- Lb4 2.Kb8 Lb5 3.Kc7 =

b) 2.S×a3? Sd7 ♯

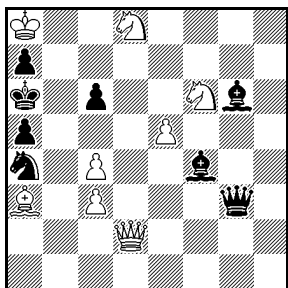
c) 3.Ld8? Lb5 Zz. 4.Lb6 (4.La5 K×a5 ♯) Lf1 ♯

d) 4.Lc3? Lb5 5.Ld4 Lf1 ♯

e) 5.- Lf1 6.Sc6 Lg2 7.Lc7

f) 8.Lb4? Lg3 9.La5 Lc8 ♯

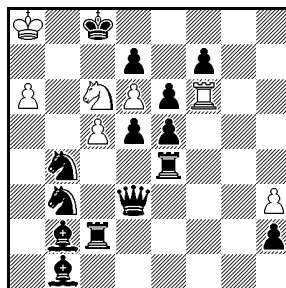
D/17



Draw

8+8

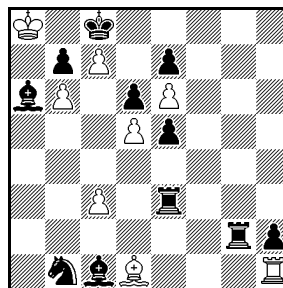
D/18



Win

7+14

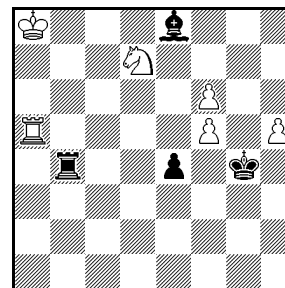
D/19



Draw

8+11

D/20



Win

6+4

D/17

1.Dd4! [a] Sb6+ 2.D×b6+ [b] a×b6 [c] 3.Se6! [d] **L×e5** [e] **4.Ld6!** L×d6 [f] 5.Sc7+! L×c7 6.Sd7! a4 [g] 7.Sc5+ Ka5 8.Sb7+ Ka6 9.Sc5+ =

a) 1.Sd7? L×d2 2.Sb8+ Kb6 3.Se6 Dd3 4.Ld6 D×d6; 1.Se6? Sb6+ 2.Kb8 L×e5+; 1.c5? L×d2♯; 1.Dd6? L×e5♯

- b) 2.Kb8? L×e5+±
- c) 2.– K×b6 3.Se6 c5/a4 4.Sd7+ Kc6/Ka6 5.Sb8+/Sc7+ Kb6/Ka5 6.L×c5#/Lb4#
- d) 3.Ld6? D×c3; 3.Sd7? L×e5 4.Ld6 L×d6 5.Se6 Lb4!
- e) 3.– b5 4.Sd7 a4 5.Sc7+ Ka5 6.Lb4#; 3.– a4 4.Sc7+ Ka5 5.Lb4#
- f) 4.– b5 5.Sc7+ Kb6 6.c5#
- g) 5.Sd7? Lb4!±
- h) 6.– b5 7.Sc5+ Kb6 8.Sd7+ =

D/18

Main line A: 1.Sa7+! (1.Se7+?) Kd8 2.Th6 D×h3 (see main line B) **3.T×h3 Th4!** (see main line C) **4.T×h4 h1=D!** [a] **5.T×h1 Th2!** **6.T×h2 Lh7!** 7.T×h7 e4 (Black won the first battle by right timed thematic sacrifices, white rook cannot transfer to the g-file) 8.Th3! S×a6! [b] **9.Tg3!** [c, d] **Lg7!** [e] 10.Sb5! [f] Ke8! 11.Sc7+! Kf8 12.T×b3! (12.S×a6?-) S×c5 13.Tb8#

Main line B: 2.– Th4 **3.T×h4 Dh7!** (the first genuine thematic sacrifice) 4.T×b4 (2#). Not 4.T×h7? e4! Logically Black aims for a sacrifice at h7 because then he can simultaneously defend both the square h8 and against the white rook transferring to the g-file. This objective is reached only much later, and White has then new resources.

Main line C: **3.– h1=D** 4.T×h1 **Th2** 5.T×h2 **Th4** 6.T×h4 e4 7.Tg4! (2#): Making the thematical sacrifices in a different order, Black managed to close the fourth rank to b4 for the white rook. However the move e4 also closed the dearly opened Lb1-h7 line.

- a) A genuine thematic sacrifice because bSb4 was really threatened. Now 5.T×b4? is prevented by 5.– d4+!, because 1.Sa7+ blocked the otherwise winning move 6.Ka7!. In this sense 1.Se7+ would have been better, but of course it fails to 2.– Da6+.
- b) 8.– Le5 (preventing 9.Tg3, the alternative 8.– Lg7 is similar) 9.T×b3 S×a6 10.Tb6 Ld4! (10.– Sc7+ 11.Kb7! ±) 11.T×a6 L×c5 (the same position as in variation d), but White has the move) 12.Kb7 (now the threat is 13.Sc6+!) B×d6! (this radical way is the only one for Black) 13.T×d6 ± Note that the greedy white rook captured DTDTLSSL, and wants to get the pawns as dessert! The general result of this unusual ending of T+S versus 5 pawns is a White win if the pawns can be stopped. In this particular position, Black can play his pawns so that they are not lost nor blocked by rook and knight alone. The fluid pawn mass means that this is a race where an active white king is the important factor. Here the white king has a good position, White wins. The critical line, generated by human aided computer analysis: 13.– Ke7 14.Sb5 e3 (14.– f5 15.Kc7 ±) 15.Ta6 f5 16.Kb6 f4 (16.– d6 17.Kc6 f4 18.Sd4 e5 19.K×d5! ±) 17.Kc5 f3 18.Ta1 f2 19.Sc3! Kf6 20.Kd4 ±
- c) 9.T×b3? Ld4! 10.Tg3 (d) Sc7+ 11.d×c7+ (or 11.Kb7 Se8 12.Tg8 L×c5 13.Sb5 L×d6! 14.S×d6 Ke7 = The black pawns actually are here stronger than the misplaced white pieces); 11.– K×c7 12.Sb5+ Kc6 13.S×d4+ K×c5 = Here the black king dominates, and the white king is far away. So no wonder that also according to deep computer analysis Black has a clear draw. The critical line: 14.Sb3+ Kb4 15.Kb7 f5 16.Kc7 f4 17.Th3 f3 18.Sd2 Kc3 19.Sf1!? (19.S×f3 e×f3 20.T×f3+ Kc2 =) Kd4 20.Sh2 Ke3 21.Kd6 d4 22.Ke5 d6+! (Here Black needs all his pawns for the draw) 23.K×d6 d3 24.Ke5 d2 25.Sg4+ Ke2 26.Th2+ f2! 27.S×f2 e3! =
- d) (9.T×b3? Ld4!) and now a) 10.Tb6 L×c5 11.T×a6 (same position as in b) after 11.– L×c5, but here Black has the move, a crucial tempo!) 11.– e3 12.Sb5 (no time for 12.Kb7? L×d6!) f5 13.Kb7 Ke8=; or b) 10.c6 d×c6 11.S×c6+ Kd7 12.S×d4 K×d6 =
- e) In the main line White made an „in between move“ threatening back rank mate. By moving his rook white renews the threat on Sb3, the thematical requirement of proxiness is fulfilled. The move 9.– Lg7! is an „optically“ thematic sacrifice, because while this „threat“ on Sb3 is a potential legal move, in reality in the end it will prove to be a mistake if done. The alternative move 9.– Sc7+ is less good: 10.d×c7+ K×c7 11.T×b3 (the threat is 12.Tb8!) Ld4! 12.Tb7+ Kd8 13.c6 d×c6 14.S×c6+ Ke8 15.S×d4 ±
- f) Neither 10.T×g7? nor 10.T×b3? [g]. Now the threat is 11.T×g7.
- g) 10.T×g7? Sc7+! 11.Kb8 (11.d×c7+ K×c7 12.R×f7 S×c5=) Se8 12.Tg8 Sd4! =, e. g. 13.Kb7 e3 14.c6 d×c6 15.S×c6+ Kd7 16.S×d4 S×d6+ =; or 10.T×b3?, e. g. 10.– e3! and Black is better.

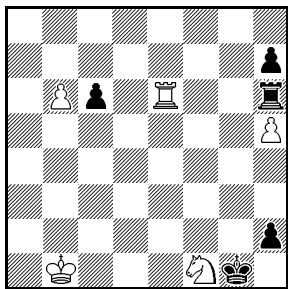
D/19

1.La4 **Lb5** **2.Tf1** Tf3 3.T×f3 Lh6 **4.Tg3 Le3** 5.T×g2 L×b6 6.L×b5 h1=D 7.Tg8+ K×c7 8.Te8 Dh4 9.Tb8 La7 10.T×b7+ Kd8 11.K×a7 Df2+ 12.Ka6 Da2+ 13.Kb6 Df2+ 14.Ka6 S×c3 15.Tb8+ Kc7 16.Tb7+ =

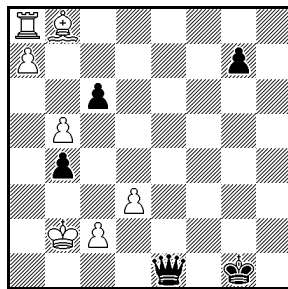
D/20

1.f7! A pawn sacrifice to win time for h-pawn advance. [a)] 1.- L×f7 2.h6! [b)] Tb1! 3.Se5+! [c)] K×f5! [d)] 4.h7! But now h-pawn advance is the right move, it will be protected by a series of trick moves. [e)] 4.- Ld5+! 5.T×d5 Ta1+ 6.Kb8! [g)] Th1 7.Sf7+! (7.Sd7+?) **Ke6! 8.Td1!** (theme in solution) [h)] 8.- T×d1/K×f7/T×h7 9.h8=D/T×h1/Sg5+ ± Now the reason not to play the natural 6.Kb7? is clear.

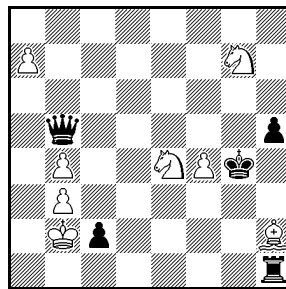
- a) If at once 1.h6? then Black can take the unprotected Sd7: 1.- L×d7 2.h7 (2.Tc5 e3! =) Lc6+ 3.Ka7 Tb7+
- b) White does not afford to fork the bishop because White's remaining pawn is not any stronger than Black's e-pawn: 2.Se5+? K×h5! =, e.g. 3.S×f7 e3 4.e5 (4.Sd6 Kg5! =) Tb6! 5.T×e3 Tf6 =
- c) 3.h7? Again right timing for h-pawn advance is required: 3.- Th1 4.Se5+ Kg3! 5.S×f7 T×h7 =, e.g. 6.Sd6 e3 7.f6 e2 8.Te5 Kf2 9.Se4+ Kf3 10.Sg5+ Kf4 11.f7 Th8+ 12.Te8 e1=D=; 3.Sf6+? Kf3! (3.- Kf4 4.Sh5+) 4.h7 Th1 5.Ta7 Lc4 6.Tc7 Ld3 7.Tc8 e3 8.h8=D T×h8 9.T×h8 L×f5 =
- d) 3.- Kg3 4.S×f7 Th1 5.f6 ±
- e) 4.S×f7+? **Kg6! 5.Th5!** (theme in try) Ta1+! 6.Kb8! Tb1+ 7.Kc8 Tc1+ 8.Kd8 (8.Kd7 Tf1! =) Ta1 9.h7 [f)] Ta8+ 10.Kc7 K×h5 11.Sd8 Ta7+ 12.Sb7 Ta8 =
- f) 9.Ke8 Ta8+ =, e.g. 10.Sd8 Kh7 (complicated is 10.- Ta7!?) 11.Ke7 e3 12.Sf7 e2 13.Th1 Ta7+ 14.Ke6 Ta6+ 15.Kf5 Ta5+ 16.Ke4 Ta4+ 17.Ke3 Ta5 18.K×e2 Tf5 19.Tf1 T×f1 20.K×f1 Kg6 =
- g) 6.Ta5? T×a5+ 7.Kb7 T×e5 8.h8=D e3! =; 6.Kb7?
- h) 8.Td8? T×h7! 9.Sg5+ Ke7 =

D/21

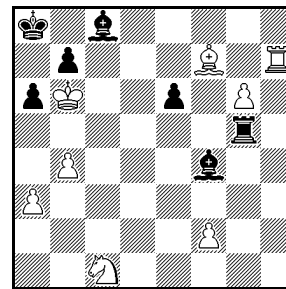
Win 5+5

D/22

Win 7+5

D/23

Win 8+5

D/24

Win 8+7

D/21

1.Te1 [a)] Kf2! [b)] 2.S×h2 [d)] T×h5 [e)] **3.Te5!** [f)] Th4 [g)] 4.Tb5! [h)] c×b5 5.b7 T×h2 6.b8=D ± (EGTB confirmed)

- a) 1.T×h6? h1=D
- b) 1.- h1=D 2.Se3+ (also 2.Dg3+) Kh2 3.Sg4+ Kg2 4.T×h1 K×h1 5.S×h6 ±; 1.- Td6 2.Tc1 h1=D [c)] 3.Sg3+ Kg2 4.S×h1 c5 5.Tc2+ K×h1 6.b7 Td8 (6.- Tb6+ 7.Tb2) 7.T×c5 Tb8 8.Tb5 ±; 1.- c5 2.S×h2+ K×h2 3.Te2+! Kg1 4.b7 Tb6+ 5.Tb2 ±
- c) 2.- Td7,Td8 3.S×h2+ K×h2 4.T×c6 Tb7,Tb8 5.Kb2 Kg3 6.Kb3 Kf4 7.Kb4 Ke5 8.Kb5 ±
- d) 2.b7? h1=D 3.b8=D K×e1
- e) Attacks wSh2; 2.- K×e1 3.b7 (or exchange of moves: 3.Sf3+ Kf2 4.b7! T×h5 5.Sd4) T×h5 4.Sf3+ Kf2 5.Sd4 ±
- f) 3.b7? Tb5+ 4.Kc2 K×e1 =; 3.Te7? Tb5+ 4.Kc2 T×b6 =
- g) Black refuses to capture both pieces; 3.- T×e5 4.Sg4+ Kg2 5.S×e5; 3.- T×h2 4.b7 ±
- h) Semi-thematic. Black, on the previous move, played his rook to h4, directly attacking wSh2 (although he could have captured it immediately instead), and White puts a second piece en-prise. 4.b7? Tb4+ 5.Kc2 T×b7; 4.Kc2? Tb4 =

D/22

1.Lh2+ **Kg2** [a)] **2.Te8!** D×e8 [b)] 3.Lb8! De1 4.a8=D Dc3+ 5.Kb1 De1+ 6.Ka2 De6+ 7.c4! [c)] b×c3 e.p.+ [d)] 8.Ka3 c2 9.Lf4 ±

- a) 1.– K×h2 2.Th8+ Kg3 3.a8=D De5+ 4.Kb1 De1+ 5.Ka2 De6+ 6.c4 b×c3 e. p.+ 7.Ka3; 1.– Kh1 2.Th8 Dc3+ 3.Kb1 De1+ 4.Ka2 Kg2 5.a8=D De6+ 6.Kb2 Df6+ 7.Kb1 Df1+ 8.Ka2 Df7+ 9.c4 b×c3+ 10.Ka3 ±
- b) 2.– Dc3+ 3.Kb1 b3 4.Te2+ Kf3 5.a8=D
- c) 7.Kb2 Df6+ 8.Kb1 Df1+ 9.Ka2 Df7+ 10.c4, loss of time
- d) 7.– De2+ 8.Kb3 D×d3+ 9.K×b4 ±

D/23

1.Sf2+ Kh4 2.Lg3+ K×g3 3.S×h1+ Kh4 4.a8=D [a)] c1=D+ 5.K×c1 Df1+ 6.Kb2 **Dg2+** 7.**Sf2!** D×f2+ 8.Ka3! ±
7.– D×a8 8.Sf5#

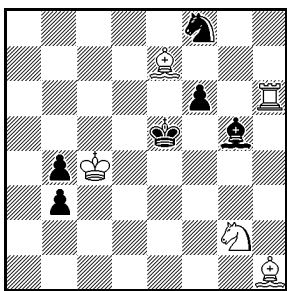
- a) Try: 4.Sf5+? D×f5 5.a8=D c1=D+ 6.K×c1 Dc8+ 7.D×c8 stalemate

D/24

1.Le8 [a)] Kb8! [b)] 2.Sd3 [c)] **Ld7!** [d)] 3.Se5! Lc8! [e)] 4.Sf3 Td5! [f)] 5.La4! [g)] Td6+ [h)] 6.Kc5 b6+ [i)] 7.Kc4 b5+ [j)] 8.Kc3! ± [k)], e. g. b×a4 9.g7 Td8 10.Th8

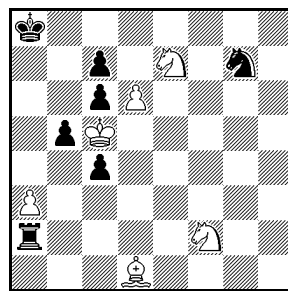
- a) 1.a4? Kb8 2.Le8,Lg8 L×c1
- b) 1.– L×c1 2.Tc7 [2.Kc7] Kb8 3.T×c1 e5 4.Tc7
- c) 2.La4,Lc6? L×c1
- d) 2.– Ld6 3.f4 [3.Sc5]
- e) 3.– L×e8 4.Th8
- f) 4.– Tg2 5.Kc5 [5.b5!]; 4.– Tf5 5.Lc6! b×c6 6.Sd4
- g) 5.Lc6? b×c6 6.Tf7 [6.g7 Lc7+ 7.Kc6 Lb7#; 6.K×c6 Td3! 7.g7 Tc3+ 8.Kb6 Lc7#] Tb5+ 7.K×c6 Lb7+ 8.Kd7 L×f3 9.Tf4 Lh5; 5.a4? Ld6
- h) 5.– e5 6.g7 Td6+ 7.Kc5 Tg6 8.Sh4! [8.Le8!]
- i) 6.– b5 7.Lb3 Td8 8.Sd4 Lb7 9.Se6; 6.– Td8 7.g7
- j) 7.– e5 8.g7 Le6+ 9.Kc3 Td8 10.Th8 Lg8 11.Lc2
- k) 8.L×b5? a×b5+ 9.K×b5 La6+ 10.Kc5 Td5+; 10.Ka4 Ld3 11.Th8+ Kb7 12.g7 Tc6; 8.Kb3? Td3+

D/25



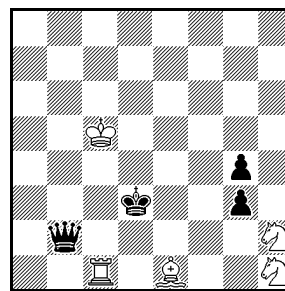
Draw, Black to move 5+6

D/26



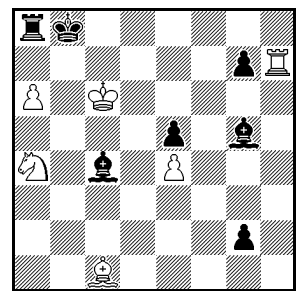
Win 6+7

D/27



Draw 5+4

D/28



Win 6+7

D/25

1.– b2! [a)] 2.L×f6+! [b)] L×f6 3.Th5+! [c)] Lg5! [d)] 4.T×g5+ [e)] Kf6! [f)] 5.Tf5+! [g)] K×f5 6.Se3+ [h)] **Kf4** [i)] **7.Le4!** [j)] K×e4 [k)] 8.Sf1 with three main variants:
8.– Se6 9.Sd2+ Ke3 10.Sb1 Sd4! [l)] 11.K×b4 Kd3 12.Sa3! [m)] Sc2+ 13.Kb3= [n)]
8.– Sd7,Sg6 9.Sd2+ Ke3 10.Sb1 Se5+ 11.K×b4 [o)] Kd3 12.Kb3 = [p)] (e. g. Sc4 13.Sa3,Sc3 =)
8.– Kf3 [q)] 9.Sd2+ Ke2 10.Kb3! [r)] K×d2 11.K×b2 Kd3,Sd7,Se6 12.Kb3=

- a) 1.– L×h6 2.K×b3 =; 1.– Sg6? 2.Th3 (2.T×g6? b2 3.L×b4 b1=D 4.T×g5+ f×g5 5.Se1 g4 ±) b2 3.Tb3±
- b) 2.Th5? b1=D 3.L×f8 b3 4.La3 Dc2+ 5.Kb4 Dd2+ 6.Ka4 b2 ±; 2.Th8? b1=D 3.L×f8 (3.T×f8 D×h1 ±) b3 4.Se1 b2 5.Sd3+ D×d3+ 6.K×d3 b1=D+ ±; 2.L×f8? L×h6 3.L×h6 b1=D ±

- c) 3.Se3? b1=D 4.Sg4+ Kf4 5.T×f6+ (5.S×f6 Kg5 6.Sg8 b3 干) K×g4 6.T×f8 D×h1 干
- d) 3.– Ke4 4.Se1+ Ke3 5.Sd3 b1=D 6.Th3+! Kd2,Ke2 7.Th2+ Ke3 8.Th3+ =
- e) 4.Sh4,Se1,Se3? b1=D 干
- f) 4.– Ke4? 5.Se1+ Kf4 6.Tg1 b1=D 7.Sg2+ ±; 4.– Kd6? 5.Td5+ Ke7 6.Td1 ±; 4.– Ke6? 5.Sf4+ Kf6 6.Tg1 ±
- g) 5.Se3? b1=D 干, not 5.– K×g5? 6.Le4 =
- h) 6.Sh4+? Kf4! 干, but not 6.– Ke5? 7.Sf3+ Ke4,Kf4 8.Sd2(+)=; not 6.– Kg4,Kg5? 7.Le4 =
- i) 6.– Ke5 7.Le4 =
- j) 7.Sd5+? Ke5! 干, but not 7.– Kf5? 8.S×f6 K×f6,b1=D 9.Le4(+)=
- k) 7.– K×e3 8.Lf5 Kd2 9.K×b4 =
- l) 10.– Ke2 11.Kb3 12.K×b2 =, but not 11.K×b4? Kd1 12.Kb3 Kc1 干
- m) 12.Sc3? Kc2 13.Kc4 Sf5 14.Kb4 Sd6 干; 12.Ka3? Kc2! 13.Ka2 Sb5 14.Sd2 Sc3+ 15.Ka3 Sb1+ 干
- n) 13.S×c2? b1=D+ 干
- o) 11.Kb3? Sd3 干
- p) 12.Ka3? Kc2 干; 12.Sa3? Kd2 13.Kb3 Kc1 干; 12.Sc3? Kc2 干
- q) 8.– b1=D 9.Sd2+ =; 8.– b1=S 9.K×b4 =; 8.– b3 9.Kc3 =
- r) 10.Sb1? Kd1 11.K×b4 Kc1 12.Sa3 Se6 13.Kb3 Sd4+ 14.Kc3 Sb5+ 干

D/26

1.Lg4! [a] c×d6+ [b] 2.Kb6! [c] Se6! [d] 3.L×e6 [e] Te2! [f] 4.Se4! [g] T×e4 [h] 5.Sd5! Kb8 [i] 6.Sc7 c3 [j] 7.Sa6+ [k] Ka8 8.Ld7 [l] Te7 [m] 9.L×c6+ [n] Tb7+ 10.L×b7#

- a) 1.d×c7? Se6+ 2.K×c6 S×c7 3.K×c7 T×f2=; 1.d7? Se6+ 2.K×c6 T×f2 3.Lg4 Sd8+ 4.K×c7 Tf8 5.Sg6 Tg8 6.Lf3+,Lf5 Ka7=; 1.Lf3? c×d6+ 2.Kb6 d5=; 1.Se4? c×d6+ 2.Kb6,K×c6,S×d6 T×a3 =
- b) 1.– Se6+ 2.L×e6 c×d6+ 3.Kb6 ±, see main line; 1.– T×f2 2.d×c7 Tf8 3.Kb6 c3 4.Lf3 ±; 1.– Kb7 2.d7 Td2 3.Se4 Td3 4.S×c6 c3 5.K×b5 c2 6.Sc5+ ±
- c) 2.K×c6,K×d6? T×f2 =
- d) 2.– T×f2 3.Lc8 c3 4.Lb7+ Kb8 5.S×c6#; 2.– T×a3 3.S×c6 c3 4.Lc8 c2 5.Lb7#; 2.– c3 3.Lc8 c2 4.S×c6 c1=D 5.Lb7#
- e) 3.S×c6? Sc5 4.K×b5 (4.Sd1 T×a3 =) T×f2 =; 3.Se4? Sd8 4.S×d6 (4.S×c6 S×c6 =) T×a3 =
- f) 3.– T×f2 4.Lc8 c3 5.Lb7+ Kb8 6.S×c6#; 3.– T×a3 4.S×c6 c3 5.Lc8 c2 6.Lb7#
- g) 4.K×c6? T×e6 =, but not 4.– T×f2? 5.Kb6 c3 6.Ld5+ ±; 4.Ld7? T×e7 =, but not 4.– T×f2? 5.L×c6+ ±; 4.Lc8? T×e7 =, but not 4.– T×f2? 5.Lb7+ ±; 4.S×c6? T×e6 =, but not 4.– T×f2? 5.Ld5 ±
- h) 4.– c3 5.Lc8 c2 6.S×c6 c1=D 7.Lb7#
- i) 5.– T×e6 6.Sc7+ Kb8 7.S×e6 c3 8.Sf4 ± or 7.– b4 8.a×b4 c5 9.b5 ±; 5.– c3 6.Sc7+ Kb8 7.Sa6+ ±, see main line
- j) 6.– T×e6 7.S×e6 ±, see i)
- k) 7.Lf5? Ta4 =; not 7.– c2? 8.Sa6+ Ka8 9.L×e4 c1=D 10.L×c6+ ±; 7.Lb3? Tc4 8.L×c4 c2 9.Le6 c1=D 10.Sa6+ Ka8 11.Sc7+=; 7.Ld7? Ta4 (not 7.– c2? 8.Sa6+ Ka8 9.L×c6#) 8.Sa6+ T×a6+ 干
- l) 8.Sc7+? wastes time: 8.– Kb8 9.Sa6+ Ka8 10.Ld7 ±; 8.Lc8? Te7 =; 8.Lf5? Ta4 =; 8.Lb3? Tc4 =
- m) 8.– c2 9.L×c6#; 8.– Tc4 9.Lc8 c2 10.Lb7#
- n) 9.Sc7+? wastes time: 9.– Kb8 10.Sa6+ Ka8 11.L×c6+ ±

D/27

1.Td1+! [a] Ke2! [b] 2.Td2+ [c] D×d2 3.L×d2 g2 4.Sf1! g1=D+! [d] 5.Le3! Dg2 [e] 6.Shg3+! =

- a) 1.Tc3+? D×c3+! 2.L×c3 g2! 3.S×g4 g1=D+ ±

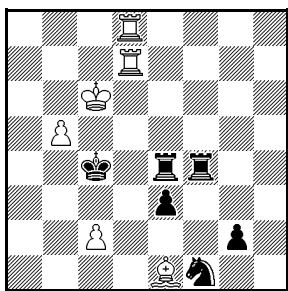
- b) 1.– Kc3? 2.S×g4+ Ke2 3.L×g3! K×d1 4.Shf2+ =
 c) 2.L×g3? Dc2+! 3.Kb4 D×d1 4.Sf2 Dg1 ±
 d) 4.– g×f1=D? 5.Sg3+; 4.– g×h1=D? 5.Sg3+; 4.– K×f1? 5.Sg3+ Kf2 6.Sf5 =; 4.– Kd3? (Kf3?) 5.Shg3! etc. — see ahead
 e) 5.– D×f1 6.Sg3+ K×e3 7.S×f1+ Kf2 8.Sd2! =; 5.– D×h1? 6.Sg3+ K×e3 7.S×h1 Kf3 8.Kd4(d5)! =

D/28

1.a7+ [a)] K×a7 [b)] 2.T×g7+ Lf7! [c)] 3.T×f7+ [d)] Ka6 4.Sc5+ [e)] Ka5 5.L×g5 Ta6+! [f)] 6.S×a6 [g)] g1=D 7.Tf2!
 [h)] D×f2 [i)] 8.Sc5! Dc2 [j)] 9.Ld2+ D×d2 10.Sb3+ Kb4 11.S×d2±

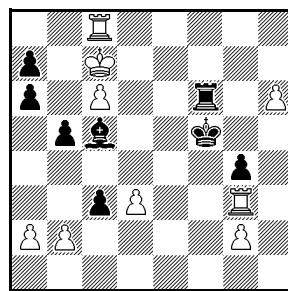
- a) 1.Sb6? Lb5+ 2.K×b5 T×a6 3.K×a6 g1=D
 b) 1.– Kc8 2.Th8+ Ld8 3.Sb6#; 1.– T×a7 2.Th8+ ±
 c) 2.– Kb8 3.Tb7+ Kc8 4.Sb6+ Kd8 5.L×g5+
 d) 3.L×g5? Tc8+ 4.Kd7 g1=D; 3.T×g5? Le8+
 e) 4.L×g5? Tc8+ 5.Kd7 g1=D
 f) 5.– Tc8+ 6.Kd6 g1=D 7.Ld2+ Kb5 8.Tb7+ Kc4 9.Tb4#
 g) 6.Kd5? g1=D 7.Ld8+ Tb6 8.L×b6+ K×b6
 h) 7.Tf3? Db6+
 i) 7.– Da1 8.Sc5±; 7.– D×g5 8.Ta2#; 7.– K×a6 8.Ta2#
 j) 8.– Kb4 9.Sd3±±

D/29



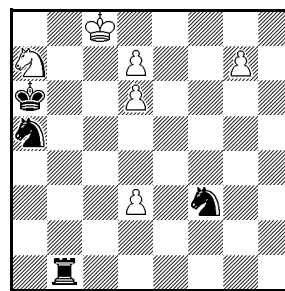
Draw 6+6

D/30



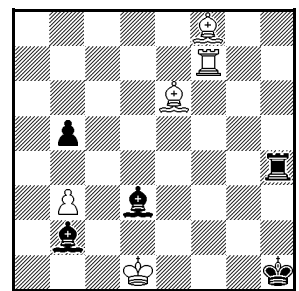
Win 9+8

D/31



Win, Black to move 6+4

D/32



Win 5+5

D/29

1.Tg8! [a)] Tg4 2.Te7! Tef4 [c)] 3.Tf7! Td4 [d)] 4.Ta7! [e)] Td6+! 5.K×d6 T×g8 6.Ta4+ K×b5 7.Tb4+ Ka6 8.Ta4+ Kb7
 9.Tb4+ Kc8 10.Tc4+ Kd8 11.La5+! [f)] Ke8 12.Te4+ Kf7 13.Tf4+ Kg6 14.Tg4+ Kh7 15.Th4+ Kg6 16.Tg4+ =

- a) 1.Tg7? Tg4 2.Te8 Td4 3.Ta8 Td6+! 4.K×d6 T×g7 5.Ta4+ K×b5 6.Tb4+ Ka6 7.Ta4+ Kb7 8.Tb4+ Kc8! [b)] 9.Tc4+
 Kd8! 10.La5+ Ke8 ±, e.g. 11.Te4+ Kf8 12.Tf4+ Kg8 ±
 b) 8.– Ka8 9.Ta4+ Ta7? 10.Tg4 Ta1 11.Kc6! T×e1 12.Tg8+ Ka7 13.Tg7+ Ka6 14.Tg8 Ka5 15.Kc5 =
 c) 2.– g1=D 3.T×e4+ T×e4 4.T×g1 =
 d) 3.– g1=D 4.T×f4+ T×f4 5.T×g1 =
 e) 4.Tf5? Sd2 5.Tc5+ Kb4 ±
 f) 11.Lh4+? Ke8 12.Te4+ Kf7 13.Tf4+ Kg6 14.Tg4+ Kh7 ±

Theme shown in try and in solution. At the end, a subtle reasoning for which rook to start with.

D/30

1.h7 [a)] Tf7+ [b)] 2.Kb8 [c)] T×h7 [d)] 3.c7 [e)] T×c7! [f)] 4.T×c7 [g)] c×b2! [h)] 5.T×c5+ [i)] Kf4 [j)] Now that black
 King moved to attack wTg3, White plays the thematic move 6.Te5! [k)] b1=D [l)] 7.Tge3 Dh1 8.g3#

- a) 1.b×c3? Tf7+ 2.Kb8 Ld6+ 3.c7 L×g3, or 2.Kd8 Tf8+ 3.Kd7 Tf7+ 4.Kd8 Tf8+ =; and not 4.Ke8? Ke6 ≠
- b) 1.– Ld6+ 2.Kd7 ±, e. g. 2.– Le5 3.h8=D Tf7+ 4.Ke8 L×h8 5.b×c3 Th7 6.d4 b4 7.Tb8 b×c3 8.Tb7 c2 9.Tc3 L×d4 10.T×c2 Th8+ 11.Kd7 Th7+ 12.Kd6 Le5+ 13.Kd5
- c) 2.Kd8? T×h7 3.b×c3 Lb6+ 4.Ke8 Ke6 5.Kf8 Th8+ 6.Kg7 T×c8 ≠
- d) 2.– Ld6+ 3.c7 T×h7 see f) (3.– Ld6)
- e) 3.b×c3? Ld6+ 4.c7 L×g3 5.Kb7 Tf7 6.Kc6 Tf6+ 7.Kb7 Tf7
- f) Black sacrifices his rook. 3.– Ld6 4.Te3 c×b2 5.Te1 Te7 6.Tb1 Te2 7.K×a7 Tc2 8.T×b2 T×c7+ 9.T×c7 L×c7 10.K×a6 ±, or 3.– Tf7 4.b×c3 Lf2 5.T×g4 K×g4 6.Tg8+ ±
- g) 4.d4? T×c8+ 5.K×c8 c×b2 6.Tb3 L×d4
- h) Black sacrifices another piece — with check! 4.– Ld6 5.Te3 c×b2 6.Te1 a5 7.Tb1 ±, or 4.– Kf4 5.d4 K×g3 6.T×c5 c×b2 7.Tc3+ K×g2 8.Tb3 ±
- i) 5.d4? b1=D 6.T×c5+ Kf4; 5.Tf7+? Kg5! 6.Tf1 Ld4 7.Kb7 Kh4 8.T×g4+ K×g4 9.K×a6 Kg3 10.K×b5 K×g2 11.Td1 Kf2 12.Kc4 Ke2 13.Th1 Lf6 14.d4 Kd2, but not 5.– Ke6? 6.Tf1 Ld6+ 7.K×a7 L×g3 8.K×a6 Lf4 9.Tb1 Lc1 10.K×b5 Kd5 11.a4 Kd4 12.a5 K×d3 13.a6 Kc2 14.T×b2+ K×b2 15.a7 ±
- j) After 5.– Kf6 White wins by 6.d4! b1=D 7.Ta3 De4 8.T×a6 Kf7 9.Tc7+ Ke8 10.Ta×a7 with a mating attack.
- k) 6.d4? b1=D
- l) If Black captures one of the rooks, the other rook is able to stop the b-pawn: 6.– K×g3 7.Te1, or 6.– K×e5 7.d4+ K×d4 8.Tb3 ±

D/31

1.– K×a7 2.d8=D Tb8+ 3.Kd7 Se5+ 4.Ke8 T×d8+ 5.K×d8 Sf7+ 6.Kc7 ±
 1.– Tc1+! 2.Kb8 Tb1+ 3.Ka8 Tb7 4.Sb5 [a] K×b5 5.d8=D! [b] T×g7 6.Df8 [c] Td7 [d] 7.Df5+ [e] Se5 [f] 8.D×e5+ **Ka6 9.De7!** Sc4 10.Kb8! [g] Sb6 11.d4! ±

- a) 4.d8=D? T×a7+ 5.Kb8 Sc6+ 6.Kc8 Ta8+ 7.Kc7 T×d8; 4.Sc8? Sc6! =
- b) 5.g8=D? T×d7 6.De8 Kc6 =
- c) 6.Df6? Tg8+ 7.Ka7 Sc6+ =
- d) 6.– Tg1 7.d7 Sc6 8.Kb7! Ta1 9.Db8! S×b8 10.d8=D ±
- e) 7.D×f3 T×d6 =
- f) 7.– Kc6 8.D×a5 ±
- g) 10.d×c4 Td8+ 11.D×d8= stalemate; 10.d4 T×e7 11.d×e7 Sd6 =

D/32

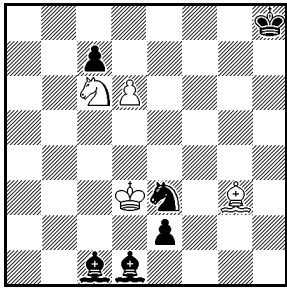
1.Ld5+ Kg1 [a] 2.Le7! Tg4 [b] 3.Lc5+ **Ld4 4.Tg7!** Lg6! [c] 5.Lf3! [d] Kh2! [e] 6.Ld6+ [f] Kg1 7.Tc7! Tg5 [g] 8.Ke2 Lb2 9.Td7! Lc2 [h] 10.Lf4 Tg8 11.Le3+ [i] Kh2 12.Td2 Tc8 [j] 13.Lf4+ Kg1 14.Td5 ±, e. g. 14.– Tg8 15.Th5

- a) 1.– **Le4 2.Th7!** T×h7 3.L×e4+ ±
- b) 2.– Th3 3.Lc5+ Kh2 4.Tf2+ ±; 2.– Td4 3.Lc5 ±
- c) 4.– T×g7 5.L×d4+ ±
- d) 5.T×g6? T×g6 6.L×d4+ Kf1! =
- e) 5.– Kf1 6.L×g4 L×g7 7.Lh3#
- f) 6.L×g4 L×g7 =
- g) 7.– Th4 8.Ke2 Lb2 9.Tc5 ±
- h) 9.– Lh5 10.Lg3 L×f3+ 11.K×f3 Tf5+ 12.Lf4 13.Td1#; 10.– T×g3 11.Td1+ Kh2 12.Th1#
- i) 11.Td2? Te8+ 12.Le3+ T×e3+! 13.K×e3 Lc1 =

j) 12.– L×b3 13.T×b2 Le6 14.Lf4+ Kh3 15.Ke3 Kh4 16.Th2+ Lh3 17.Lc6 ±

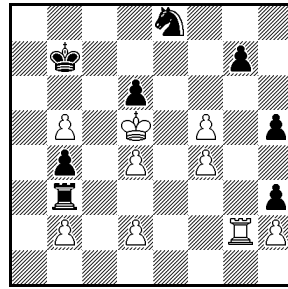
Echoed thematic situations. Three model mates. No unit captured in the main line.

D/33



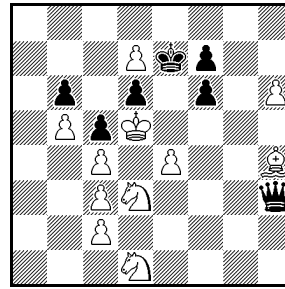
Win 4+6

D/34



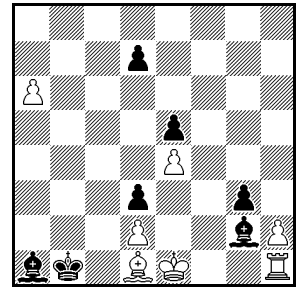
Draw 9+8

D/35



Draw 11+7

D/36



Win 7+7

D/33

1.d7 [a] e1=S+! [b] 2.L×e1 Lc2+ 3.Ke2! [c] Ld1+ 4.Kf2 Sg4+ 5.Kg3! [d] Lg5 **6.Ld2! Se5!** [e] 7.S×e5 [g] **Lf6! 8.Lg5!** (again theme at the same squares!) [h] L×g5 9.Sf7+ Kg7 10.S×g5 ±

a) 1.d×c7? Lc2+ 2.K×e2 Lf5 =

b) 1.– Lc2+ 2.K×e2 Ld1+ 3.Ke1 Sg2+ 4.K×d1 Lg5 5.Ke2! Sh4 (5.– Kg8 6.Kf3 Sh4+ 7.Kg4 ±) 6.Lf4! Lf6 7.Le5 ±

c) 3.Kd4? Sf5+ 4.Kc3 Lg5 5.K×c2 Kg8 6.Lb4 Kf7 =; 3.Kc3? Sd5+ 4.K×c2 Lg5 =

d) 5.Kf1? Lg5 6.Ld2 Lh4! =

e) 6.– Sh6!? 7.L×g5 **Sf7 8.Se5!** (theme at the same squares e5 and g5) [f] La4 9.S×f7+ ±

f) 8.Lf6+? Kh7 9.Se5 La4! =

g) 7.Lc3? La4! 8.L×e5+ Kh7 =

h) 8.Lc3? Kg8 9.Sc6 Lg5 10.Lb4 Kf7 =

D/34

1.T×g7+! (Lasker: desperado sacrifice) [a] S×g7 [b] **2.f6! Tg3!** 3.f7! [d] Td3! 4.f8=D T×d4+! 5.K×d4 Se6+ 6.Kd5 S×f8 7.K×d6 Kb6! =, e.g. 8.f5 K×b5 9.b3 Sh7 10.d4 Kb6 11.Kd7 Kb5 12.Kd6 = [e]; dynamical positional draw

a) 1.T~? T×b2 ±; 1.Te2? Sc7+ 2.K×d6 T×b2 3.Te7 Tc2! ±; 1.Tg4?? h×g4 ±

b) 1.– Kb6!? 2.Te7! Sf6+ [c] 3.Ke6! Se4! 4.Kd5 Sf6+ repetition of moves, positional draw

c) 2.– Sc7+? 3.T×c7! K×c7 4.f6 ±

d) 3.f×g7? T×g7 ±; 3.h×g3? Se8! 4.f7 Sf6+ 5.K×d6 Sh7 6.Ke7 h2 ±

e) 12.Ke6? Sg5+ 13.Ke7 Kc6! 14.f6 Kd5! ±

D/35

Black threatens D×h4, D×d7 and K×d7.

1.Se3! [2.h7,Sf5+] D×e3 [a] 2.h7 **Dh6 [c] 3.Se5!** [4.d8=D+] d×e5 [d] 4.d8=D+! K×d8 5.h8=D+ D×h8 6.L×f6+ D×f6 =

a) 1.– D×d7 2.Sf5+ Kd8 3.L×f6+ Kc7 4.Sf4 De8 5.S×d6; 1.– K×d7 2.Sf5 Dg4 [b] 3.h7 Dh5 4.L×f6 D×h7 5.S×d6 Dg8 6.Se5+

b) 2.– Dg2 3.h7 D×c2 4.L×f6 D×d3+ 5.Ld4! (5.Sd4? Dh3!) c×d4 6.h8=D

c) 2.– Dh3 3.d8=D+ K×d8 4.h8=D+ Kd7 5.Se5+ d×e5 6.D×f6 [7.D×h4+]

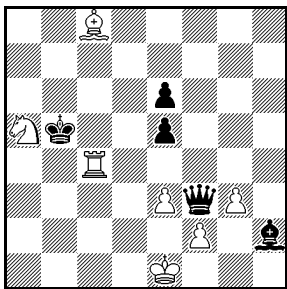
d) 3.– D×h4 4.d8=D+ K×d8 5.h8=D+ D×h8 6.S×f7+; 3.– Dd2+ 4.Sd3 D×c2 5.L×f6+

D/36

1.Lf3! [a] L×f3 **2.0-0! Kc2!** 3.T×a1! g×h2+ 4.K×h2 K×d2 [c] 5.Ta4! Ke2 6.a7! d2 7.a8=D d1=D 8.Da6+! [g] Ke3 9.Dh6+! Kd3 10.Ta3+ Kc2 11.Ta2+ Kd3 12.Kg3! [h] Lh5 [i] 13.Ta3+ Kc2 14.De3! Dg4+ 15.Kf2! [m] Dh4+ 16.Kg1 Dg4+ 17.Kf1 Dd1+ 18.Kf2! Dd2+ 19.D×d2+ K×d2 20.Ta5! ±

- a) 1.a7? L×e4 2.Lf3! L×f3 **3.0-0+ Kc2!** [b)] 4.T×a1 g×h2+ 5.K×h2 =
- b) 3.– Ka2? 4.T×f3 Ld4+ 5.Kf1 L×a7 6.T×g3! ±
- c) 4.– L×e4 5.Ta2+! Kb3 [d)] 6.Ta5 d6 7.a7 La8 [e)] 8.Kg3! Kc2 9.Ta2+ Kb3 [f)] 10.Ta6 Kc2 11.T×d6 K×d2 12.Td8 Lc6 13.Tc8 Lb7 14.Tb8 ±
- d) 5.– Kd1 6.Kg3 Ke2 7.Tb2 La8 8.Tb8 Lc6 9.Tc8 ±
- e) 7.– Kc2 8.Ta2+ Kb3 9.a8=D L×a8 10.T×a8 e4 11.Tc8 ± or 10.– Kc2 11.Kg2 K×d2 12.Kf2 d5 13.Ta2+ Kc3 14.Ta5 ±
- f) 9.– Kd1 10.Kf2 ±
- g) 8.Ta2+ Ke3 =
- h) 12.Ta3+ Kc2 =
- i) 12.– K×e4 13.Dg6+ [j)] Kd4 [k)] 14.Db6+ Ke4 15.Db4+ Kf5 16.Df8+ Ke4 [l)] 17.Da8+ d5! 18.Ta1! ± or 18.Ta4+! Kf5 19.Df8+ Kg5 20.Dg7+ Kf5 21.Dh7+ Kg5 22.Dh4+ Kf5 23.Dh3+ Kg5 24.Ta8! Dh1 25.Tg8+ Kf6 26.Tf8+! ±
- j) 13.Dh4+ Kf5 14.Dh7+ Ke6 15.Dh6+ Kf5 16.Df8+ Ke4 17.Da8+ d5 18.Ta1!±
- k) 13.– Kd5 14.Ta5+
- l) 16.– Ke6 17.D×f3 ±
- m) 15.Kh2 De2+! =

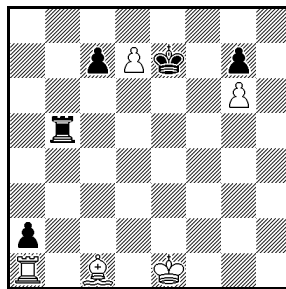
D/37



Draw

7+5

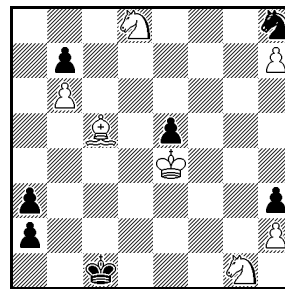
D/38



Win

5+5

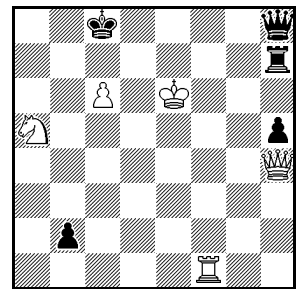
D/39



Win

7+7

D/40



Win

5+5

D/37

1.Sb3! [a)] Dh1+ [b)] 2.Ke2 K×c4 [c)] **3.Lb7!** e4 [d)] 4.L×e4 Dg1 [e)] 5.Sd2+ Kb4 6.Sf1! =

- a) 1.Lb7? Df8; 1.L×e6? K×a5
- b) 1.– L×g3 2.Ld7+! Kb6 3.Tc6+
- c) 2.– L×g3 3.Sd2 Dh2 4.Ld7+ Kb6 5.Se4 Dh5+ 6.Ke1 Lh4 7.Tc6+ Ka5 8.Tc5+ Kb4 9.Tb5+ Kc4 10.Lc6=
- d) 3.– Dg1 4.Sd2+ Kc3 5.Sf1=
- e) 4.– D×e4 5.Sd2+ Kd5 6.S×e4 K×e4 7.f3+ Kf5 8.Kf2

D/38

1.Lh6? Tb1+!
1.Lb2! T×b2 2.d8=D+ K×d8 3.0-0+ Ke7 4.K×b2
1.– Td5 2.L×g7 K×d7,T×d7 3.Td1(+)

D/39

1.Se2! Kc2! 2.Sd4+! Kb2 [a)] 3.La3+! K×a3 4.Sc2+ **Kb2** 5.Sc6! K×c2 [b)] 6.Sb4+ Kd2! [c)] 7.S×a2 Sf7! 8.Kf5! [d)] e4!
9.Sb4! (switchback) [e)] e3 10.Sc6! (switchback) [f)] e2 [g)] 11.Sd4 e1=D 12.Sf3+! ±
White and Black switchbacks.

- a) 2.– Kc3 3.Lb4+ K×b4 4.Sc2+ Kc3 5.Sa1 Kb2 6.Sb7 ±
- b) 5.– b×c6 6.Sa1! K×a1 7.b7 ±
- c) 6.– Kb2 7.Sa2 ±

- d) 8.Sb4? Sg5+ 9.K×e5 Sh7 =
- e) 9.K×e4? Sg5+ 10.Kd5 S×h7 =; 9.Kf4? e3 10.Sc1 Sh8! (switchback) 11.Sb3+ Kc3 12.Sc1 Kd2! =
- f) 10.Kf6? Sh8! (switchback) 11.Sc6 Kd3! =
- g) 10.– Kc3 11.Se5! Sh8 12.Sf3 e2 13.Ke4 Kc4 14.Ke3 Kc5 15.K×e2 ±; 11.– e2 12.S×f7! e1=D 13.h8=D+ ±

D/40

1.Sc4! [a] b1D! [b] 2.T×b1 [e] Th6+ (2.– Dg8+ 3.Ke5! ±) 3.Kd5 Dg8+ 4.Kc5! [d] T×c6+! [e] 5.K×c6 and now two main variations: 5.– Dg6+ (A) and 5.– De6+ (B)

(A) First variation: 5.– Dg6+ 6.Df6! [f] D×f6+ (6.– D×b1 7.Df8+) 7.Sd6+ Kd8 8.Tb8+ Ke7 9.Te8#

(B) Second variation: 5.– De6+ 6.Kc5! [g] Df5+ [h] 7.Se5! [i] D×e5+ [j] 8.Kc4 De2+ 9.Kb4! [k] Dd2+ 10.Ka3! [l] Dd3+ (10.– De3+ 11.Tb3 ±) 11.Tb3 ±

a) 1.Kd5? Tg7! 2.Df6 (2.Dh3+ Tg4) Dd8+ 3.D×d8+ K×d8 4.Sb3 (4.Sc4 Kc7 5.Tb1 Tg5+ 6.Se5 Tg2 7.Sf3 h4 =) Kc7 5.Sd4 Tg5+ 6.Kc4 Kb6 =; 1.Dh3? Dd4 2.Df5 Dg4 3.Tb1 Th6+ 4.Ke5+ D×f5+ 5.K×f5 h4 =; 1.Sb7? Dg8+! 2.Kd6 Dg6+ 3.Kc5 Dc2+ =

b) 1.– Tg7 2.Sb6+ ±; 1.– Th6+ 2.Kd5! ±; 1.– Dg8+ 2.Kd6! b1=D (2.– Th6+ 3.Kc5! ±) 3.Dh3+! (3.T×b1? Dg6+! =) Kd8 4.T×b1 Th6+ 5.Ke5! (5.Kc5? T×c6+ 6.K×c6 D×c4+ =) De8+ 6.Kd4 ±

c) 2.Sd6+? Kc7 3.T×b1 Th6+ 4.Kf7 Dh7+ =

d) 4.Kd4? Dg7+! 5.Kc5 T×c6+ 6.K×c6 Db7+! 7.Kc5 (7.T×b7 stalemate) D×b1 8.Sb6+ (8.Sd6+ Kd7) Kb7 =

e) 4.– Df8+ 5.Kb5! Df5+ 6.Ka6! T×c6+ 7.Sb6+ T×b6+ 8.T×b6 ±

f) 6.Kc5? D×b1! 7.Sd6+ Kd7! =; 6.Kd5? Df5+! 7.Se5 (7.Kc6 Dg6+) D×b1 8.Dh3+ Kb7 =; 6.Sd6+? D×d6+ 7.K×d6 stalemate

g) 6.Kb5? Dc6+! 7.Ka5 (7.K×c6 stalemate) Da8+! 8.Kb4 Db7+ 9.Kc5 D×b1 10.Sb6+ (10.Sd6+ Kd7 =) Kb7 =

h) 6.– Dc6+!? 7.Kd4! ± (7.K×c6? stalemate)

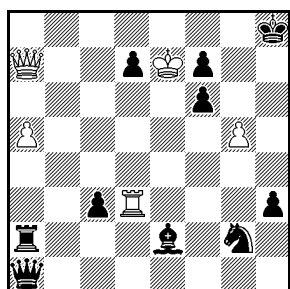
i) 7.Kd4? D×b1 =; 7.Kd6? D×b1 =; 7.Kc6? De6+

j) 7.– D×b1 8.Dh3+ (or 8.Dc4) Kb7 9.Dg2+ Kc8 10.Dg8+ Kb7 11.Dd5+ Ka7 12.Sc6+ Ka6 13.Sb4+ ±

k) 9.Kd4? Dd2+! =; 9.Kc3? De3+ 10.Kc4 De2+; 9.Kb3? Dd3+! 10.Kb2 Db5+ =; 9.Kd5? Dd3+! =

l) 10.Ka4? Da2+! =; 10.Kb3? Dd3+! =

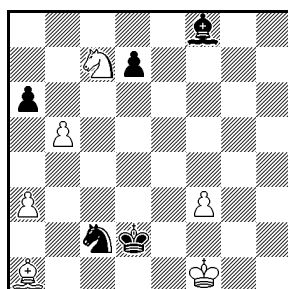
D/41



Win

5+10

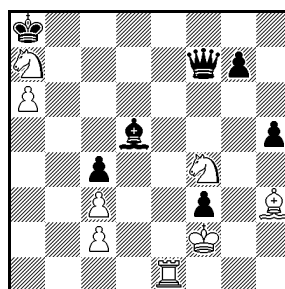
D/42



Win

6+5

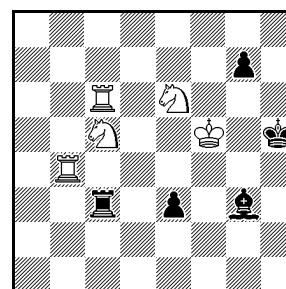
D/43



Win

8+7

D/44



Win, Black to move

5+5

D/41

Try: 1.Da8+? Kh7! 2.De4+ Kg7! 3.T×h3 Lh5! 4.T×h5 De1 5.g×f6+ Kg8 6.Tg5+ Kh8 7.D×e1 S×e1 8.K×f7 Th2 9.a6 Sf3 10.Tc5! (White threatens the unprotected black c3-pawn d5! (Black plays another pawn enprise. This pseudo theme (with pawns) is required to refute the try.) 11.T×c3 [a] Se5+! (11.– Th7+?) 12.Ke6 Te2! 13.a7 [b] Sc4+! [c] 14.K×d5 [d] Ta2 15.T×c4 T×a7 16.Ke6 Kh7! = (Again this move.)

Solution: 1.K×f7! Lh5+ 2.g6 L×g6+ 3.K×g6 Sh4+! [e] 4.Kf7 T×a5! 5.Td5! T×d5 [f] 6.Db8+ [g] Kh7 7.Dg3! Dg1 (Black is lost anyhow and tries a thematic move.) 8.D×h4+! ± [h]

a) 11.Tc8+ Kh7 12.a7 Sg5+ 13.Ke7 Te2+ =, e. g. 14.Kd7 Ta2 15.a8=D T×a8 16.T×a8 d4 17.Tc8 d3 18.T×c3 Se4 19.f7 d2 20.Th3+ (20.Td3 Sc5+ =) Kg6 21.f8=D d1=D+ =

- b) 13.K×d5 Kg8! 14.Tc8+ Kf7 15.a7 Ta2 16.a8=D T×a8 17.T×a8 K×f6 =
- c) 13.– Sc6+? 14.Kf7! Se5+ 15.Ke7 Sc6+ 16.Kf8 ±
- d) 14.Kf7 Sd6+ =
- e) 3.– Sf4+ 4.Kf7! Db1 (or 4.– Df1 5.Da8,Db8+ Kh7 6.Dg8+! — 6.De4+ Kh8 7.De8+ only delays — Kh6 7.Td5 f5 8.Dg7+ Kh5 9.T×f5+ Kh4 10.Dg5#; note that without BPh3 the study has no solution.) 5.Da8+ Kh7 6.Dg8+ Kh6 7.Dh8+ Kg5 8.Tg3+ Kf5 9.Dh7+ Ke5 10.D×b1 ±
- f) 5.– Db1 6.Th5+!
- g) 6.D×a1?
- h) If now 8.D×g1? Sg2? 9.Db1+! ± Or 8.– Kh6? 9.Dg4! ± But 8.– Tg5! =

D/42

1.b6! [a)] Lc5 2.b7 La7 3.Lh8! [b)] Se3 4.Kg1! **Sd5 5.Ld4!** L×d4 6.Kh1! [c)] La7 7.Sd5 ±
 Corner moves.

- a) 1.b×a6? Lc5! 2.L~ Se3!
- b) 3.Lf6? Se3! 4.Kg1 Sg4! (4.– Sd5? 5.Ld4!) 5.Ld4 L×d4 6.Kh1 Sf2! 7.Kg2 La7
- c) 6.Kg2,Kf1? Se3!; 6.Kh2? Le5!

D/43

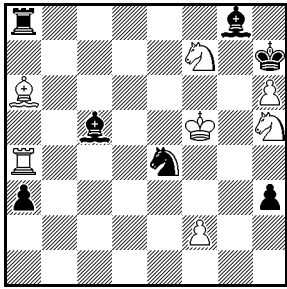
1.Sb5 Lc6! 2.Te8+ [a)] L×e8 3.Le6 Df6! [b)] 4.Ld5+ Lc6 5.L×c6 [c)] **D×c6 6.Se6!** [d)] Db6+! [e)] 7.K×f3! Kb8 8.a7+ Kb7 9.Sec7 Df6+! 10.Ke2! [f)] De7+ 11.Kd1! [g)] Dd8+ 12.Kc1 h4 [h)] 13.a8=D D×a8 14.S×a8 h3 15.Sd6+ ±

- a) **2.Sd5!?** L×b5! 3.Le6 Da7+ 4.Se3 D×a6 5.Ld5+ Ka7 6.L×f3 Dd6 7.Tg1 g6 8.Tg3 h4 ∓
- b) 3.– De7 4.Ld5+ Kb8 5.a7+ D×a7 6.S×a7 K×a7 7.K×f3 Kb6 8.L×e4 g5 9.Se6 ±
- c) 5.Kf1? Kb8 6.a7+ Kc8 7.L×c6 D×c6 8.Se6 Dd5 9.Kf2 Dd2+ 10.K×f3 Dd1+ 11.Ke4 D×c2 ∓
- d) **6.Sd5!?** Dc5! 7.Kf1 g5! 8.Sdc7+ Kb8 9.a7+ D×a7! 10.S×a7 K×c7 11.Sb5+ Kd7 12.Sd4 g4 13.Sf5 Kc6 14.Se3 Kd6 15.Kf2 Ke6 16.Kg3 Ke5 17.S×c4 Ke4 18.Sd2+ Ke3 19.Sf1+ Ke2 20.Sh2 Ke3 21.c4 Kd4 =
- e) 6.– Kb8 7.a7+ Kc8 8.Sec7 Dc5+ 9.Kf1 D×a7 10.S×a7 K×c7 11.Sb5+ Kd7 12.Sd4 Kd6 13.S×f3 ±
- f) 10.Ke4? Dg6+ 11.Kd4 Dg1+ 12.K×c4 Df1+ 13.Kb4 Db1+ 14.Kc5 Dg1+ 15.Kc4 Df1 =
- g) 11.Kf1 Df6 12.Ke1 Dh4+ =
- h) 12.– Dg5+ 13.Kb2! Dd8 14.a8=D D×a8 15.S×a8 h4 16.Sd6! ±

D/44

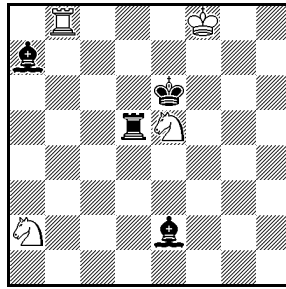
1.– g6+! [a)] 2.Kf6! [b)] e2 3.Sg7+ [c)] Kh6 4.Sf5+! [d)] g×f5 5.Tc8! Le5+! 6.K×e5 T×c5+! [e)] 7.Kf6! [f)] Tc6+ 8.T×c6 **e1=D 9.Tc1!**

- a) 1.– e2? 2.S×g7#
- b) 2.Ke4 e2 3.Tb1 g5! is not enough to win: 4.S×g5 e1=D+ 5.T×e1 L×e1 6.Sge6 Ld2 7.Tc8 Kg6 8.Ke5 Lh6 9.Tg8+ Kf7
- c) 3.Tc8 Tf3+ 4.Ke7 Lh4+! 5.Kd7 g5! 6.Th8+ Kg6 7.Te4 e1=D 8.T×e1 L×e1 9.Tg8+ Kh7 10.T×g5 Lc3
- d) 4.Te4 e1=D 5.T×e1 L×e1 6.Sge6 Tc1 7.Ta6 Lc3+ 8.Kf7 Ta1
- e) 6.– e1=D+ 7.Kf6
- f) 7.T×c5 e1=D+ 8.K×f5 D×b4

D/45

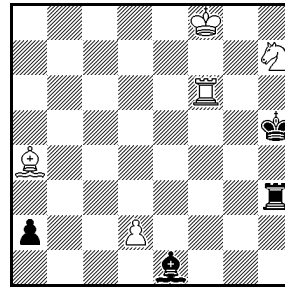
Draw

7+7

D/46

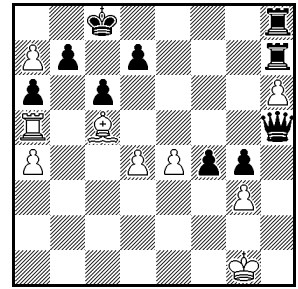
Draw

4+4

D/47

Win

5+4

D/48

Win

9+10

D/45

1.Sf6+! [a] S×f6 2.Ld3 Se4! [b] 3.Sg5+! K×h6 4.T×a8 Ld5 [c] 5.Th8+ Kg7 6.Th7+! [d] Kg8 [e] 7.T×h3! [f] a2 [g] 8.L×e4 L×e4+ 9.S×e4 a1=D 10.S×c5 =

- a) 1.Ld3? L×f7 2.Sf6+ K×h6 3.Sg4+ Kg7 4.T×a8 S×f2 5.S×f2 L×f2 6.Le2 (6.Lf1 h2 7.Lg2 a2 ≠) a2! ≠
 b) 2.– L×f7 3.K×f6+ K×h6 4.T×a8 Le8 5.T×e8 =
 c) 4.– Sd6+ 5.Kg4 Ld5 6.Th8+ Kg7 7.Th7+ Kg8 8.Lb1 a2 9.L×a2 L×a2 10.T×h3 =
 d) 6.T×h3? S×g5! 7.Tg3 (7.K×g5 a2 8.Th1 L×h1 ≠) Le7 8.Lb1 Le6+ 9.Ke5 Kf7 ≠
 e) 6.– Kf8 7.L×e4 a2 8.L×d5 a1=D 9.Tf7+ Ke8 10.Lc6+ Kd8 11.Se6+ =
 f) 7.Td7? h2 8.T×d5 Sd6+ 9.Kg6 h1=D 10.T×c5 Db7! ≠
 g) 7.– S×g5 8.K×g5! a2 9.Th1 L×h1 10.Lc4+ =

D/46

1.Te8+ Kf6 2.Sc3 Lc5+ 3.Kg8 T×e5 4.Se4+ [a] Kg6 5.T×e5 Lc4+ 6.Kh8 Ld4 7.Sf6 Lc3 [b] 8.Te6 [c] L×e6 stalemate

- a) 4.T×e5? Lc4+ 5.Td5 Kg6 6.Kh8 Le7 7.Se2 Lf6+ 8.Kg8 L×d5+ ≠
 b) 7.– L×e5 stalemate
 c) 8.Sg4? Lb2 Zz. 9.Sf6 K×f6 ≠; 8.Sd7? Lb2 9.Sf8+ Kf7 10.Sd7 (10.Sg6 Ld3 ≠) Ld3 Zz. 11.Sf6 K×f6 ≠

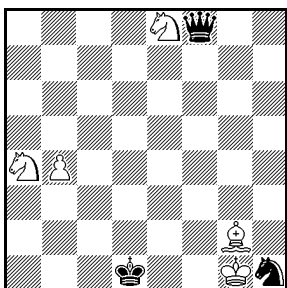
D/47

1.Ld1+ [a] Kh4 2.Ta6 L×d2 3.T×a2 [b] Ta3! (black thematic move) 4.T×d2 [c] Td3 5.Sg5! (white thematic move) [d] T×d2 6.Sf3+ 7.S×d2 ±

- a) 1.Le8+? Kg4 2.Ld7+ Kg3 3.Ta6 T×h7=; 1.Ta6? Tf3+ 2.Kg8 (2.Ke8 a1=D; 2.Ke7 Tf7+! 3.K×f7 a1=D) Tg3+ 3.Kf8 Tf3+ 4.Te7+ Tf7+! =
 b) 3.Ta4+? Lb4+! 4.T×b4 Kg3 5.Ta4 T×h7 =; 3.Kf7? Th1! =
 c) 4.Tb2? Ta8+ 5.Kf7 Ta7+ 6.Kg8 Tg7+! 7.Kh8 Lc3 =; 4.Tc2? Tc3 5.Tb2 Tc8+ 6.Kf7 Tc7+ =
 d) 5.T×d3? stalemate; 5.Th2+ Kg3 6.Le2 Te3! 7.Sf6 K×h2 8.Sg4+ Kg3 9.S×e3 Kf2=, but not 6.– Td2? 7.Sg5 K×h2 8.Sf3+ 9.S×d2 ±

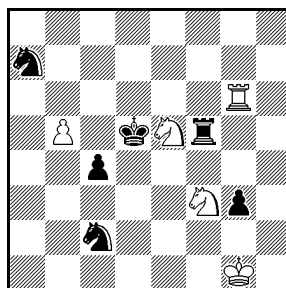
D/48

1.Ld6 Dh2+ 2.K×h2 T×h6+ 3.Th5 T×h5+ 4.Kg2 Th2+ 5.Kf1 Th1+ 6.Ke2 T8h2+ 7.Kd3 Td1+ 8.Kc3 Tc1+ 9.Kb4 Tb1+ 10.Ka5 Tb5+ 11.a×b5 Ta2+ 12.La3 T×a3+ 13.Kb4 ±

D/49

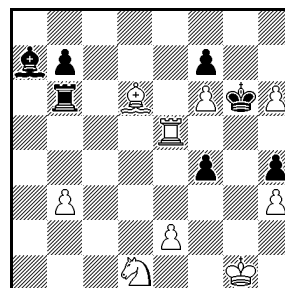
Draw

5+3

D/50

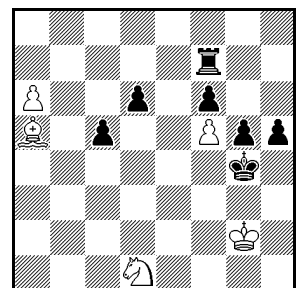
Win

5+6

D/51

Win

9+7

D/52

Win

5+7

D/49

1.K×h1 [a] D×b4 [b] 2.Sd6! [2.Se4 =, not 2.Sf6? Dh4+ 3.Kg1 D×f6 which prevents 4.Sc3+ 5.Se4] Dh4+ [d] 3.Kg1 Dd4+ 4.Kh1! [e] D×d6 [f] 5.Sc3+ Ke1 6.Se4 =

- a) 1.L×h1? Ke1 (2.Kg2 D×b4) Df2+ 3.Kh2 Dh4+ 4.Kg1 Dd4+ 5.Kh2 Kf2 6.Sc5 Dh4+ 7.Lh3 Dg3+ 8.Kh1 D×h3#
- b) 1.– D×e8 2.Sc3+ De1 3.Se4 =; 1.– Dh6+ 2.Kg1 Ke1 [c] 3.Sc5 4.Se4 =; 1.– Ke1/Ke2 2.Sc5 3.Se4 =
- c) 2.– De3+ 3.Kh1/Kf1/Kh2 De1/De2(+) 4.Kh2 Dh4+ 5.Kg1 D×b4 6.Sd6!
- d) 2.– D×a4 3.Se4 =; 2.– D×d6 3.Sc3+ Ke1/Kd2 4.Se4 =
- e) 4.Kh2?? D×d6+!; 4.Kf1? D×d6 5.Sc3+ Kc1/Kc2 6.Se4 Dd4! 7.Lf3 Kc2 8.Kg2 Db6 9.Kh2 Dh6+! (unique winning move) 10.Kg3 De3 11.Sf2 De1 12.Lh1 Kd2 13.Kg2 Ke3 14.Sh3 Ke4 15.Kh2+ (or 15.Sg5+) Kf5 16.Lf3 De5+ 17.Kg2 Dd6 (or 17.– Dc7/Db8) 18.Kf1 Dg3 19.Dg1 Df4 20.Dg2 Kd2+ 21.Se2 De1 22.Kh3 Df2 23.Lh5 (or 23.Lg4+ and mate in 10 moves) Kg5 24.Sg3 and mate in 16 moves
- f) 4.– D×a4 5.Se4 =

D/50

1.b6 Se1! [a] 2.b×a7 [b] S×f3+ 3.S×f3 [c] Tf8 4.Tg5+ Kc6 [d] 5.Se5+ Kb7 [e] 6.Tg7+ Ka6 7.Sc6 Ta8 8.Tg4 [f] Kb5 [g] 9.Tg8! T×g8 10.Sb8 ±

- a) 1.– Sc6 2.S×c6 T×f3 3.b7 Se3 4.Sb4+ ±
- b) 2.S×e1? T×e5 =
- c) 3.Kh1? K×e5 4.a8=D g2+ 5.K×g2 Sh4+ 6.Kg3 S×g6 = (Nalimov EGTB)
- d) 4.– Kd6 5.Sd2 c3 6.Se4+ Kc6 7.S×c3 ±
- e) 5.– Kb6 6.Sd7+ K×a7 7.S×f8
- f) 8.Kg2 Kb6
- g) 8.– Kb6 9.T×c4

D/51

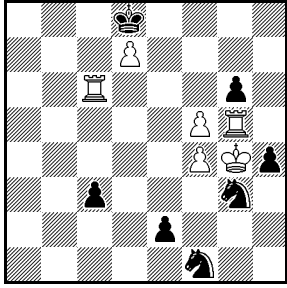
1.Lc5 Te6! [a] 2.h7! [b] K×h7 3.Tg5! [c] Kh6! [d] 4.Td5! (now!) Td6! 5.T×d6! L×c5+ 6.Se3! L×d6 7.Sf5+ ±

- a) 1.– Tb5? 2.b4 ±
- b) 2.Td5? Td6! 3.Sc3 T×d5 4.L×a7 (4.S×d5 L×c5+) Tg5+ =
- c) 3.Th5+, Tf5? Kg6 4.Td5 Td6!
- d) 3.– f3!? 4.e3! ±

D/52

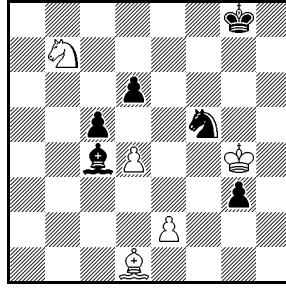
1.Se3+! [a] Kf4 [b] 2.Lc7! [c] K×e3 [e] 3.a7 T×c7 (Black captured two white pieces) 4.a8=D Kf4 [f] 5.Dd5! ± (5.– Tg7 6.De6! h4 7.D×f6)

- a) 1.Lc7?? T×c7 2.Se3+ Kh4! ±
- b) 1.– Kh4?? 2.Le1#
- c) 2.Sd5+? K×f5! 3.Lc7 [d] Tf8! 4.a7 Ta8 5.Lb8 T×a7! 6.L×a7 Ke6 =
- d) 3.Sc7 Tf8! 4.a7 Ke4! 5.a8=D T×a8 6.S×a8 f5 =
- e) 2.– Tf8? 3.L×d6+ K×e3 4.L×c5+ K~ 5.L×f8 ±
- f) 4.– Te7 5.Df3+ Kd2 6.Dd5+ Ke3 7.De6+! ±

D/53

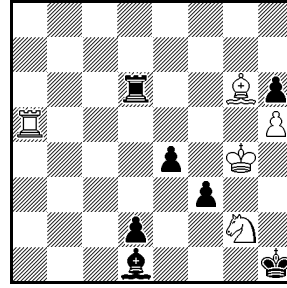
Draw

6+7

D/54

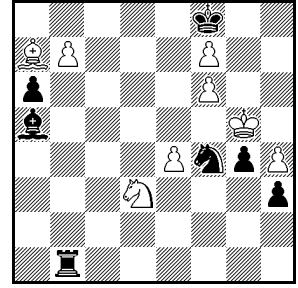
Draw

5+6

D/55

Draw

5+7

D/56

Win

8+7

D/53

1.Te6 c2! [a] 2.Tg×g6 [b] Sh2+ [c] 3.Kh3! [d] S×f5 4.Tg8+! [e] **K×d7** 5.**Tc8!** (theme in solution) Se3! [f] 6.Tcc6! [g] Sc4! 7.K×h2! [h] c1=D 8.Ted6+! Ke7 9.Te6+ Kf7 10.Tf6+ Kg7 11.Tg6+ Kh7 12.Th6+ Kg7 13.Thg6+ =

a) 1.– g×f5+? 2.Kh3 Se4 3.Tg7 ±

b) 2.f×g6? c1=D 3.g7 Sh2+ 4.Kh3 Df1+ 5.K×h4 D×f4+ 6.Kh3 D×g5 ≠

c) 2.– c1=D 3.Tg8+ K×d7 4.Tg7+ Kd8 5.Tg8+ =

d) 3.K×h4? S×f5+ ≠; 3.Kg5? Sf3+ 4.Kg4 (4.Kf6 Sh5+ 5.Kf7 e1=D ≠) S×f5! 5.Ta6 (5.K×f5 Sd4+ 6.Kf6 S×e6 7.Tg1 S×f4 ≠) c1=D 6.Tg8+ K×d7 7.Ta7+ Dc7 8.T×c7+ K×c7 9.Te8 e1=D 10.T×e1 S×e1 ≠

e) 4.Te8+?! **K×d7** 5.**Tc6!?** (theme in try; 5.Ta8 c1=D 6.Ta7+ Dc7 7.T×c7+ K×c7 8.Te6 Sf3! 9.T×e2 Sg1+ ≠) Se7! ≠; 4.Tg1? Sf1 ≠

f) 5.– K×e6 6.T×c2 Sd4 (6.– e1=D 7.Te2+ D×e2 =) 7.T×e2+ S×e2 8.f5+! Kf6 9.K×h4 =; 5.– K×c8 6.T×e2 c1=D 7.Tc2+ D×c2 =

g) 6.Tec6? Sd5! ≠

h) 7.f5? c1=D 8.Ted6+ S×d6 9.T×c1 Sf3 10.Kg4 Se5+ 11.K×h4 S×f5+ 12.Kg5 Sd3 13.Th1 Se3 ≠

D/54

1.Kh3 Ld5! [a] 2.S×d6! S×d6 3.d×c5 [c] Sf5 [d] 4.e4! L×e4 5.c6! L×c6 [e] 6.Lf3 Lb5 7.Le4! Lf1+ **8.Kg4 Ld3!** [g] 9.Lg2 Kg7 10.Lh3! [h] Kf6 11.Kf3=

a) 1.– c×d4 2.Lc2 Se3 [b] 3.Ld3 L×d3 4.e×d3 g2 5.Kh2=; 1.– g2 2.Kh2 Ld5 3.S×d6 S×d6 4.d×c5 see 3.– g2

b) 2.– Ld5 3.Sa5 Se3 4.Lb3 L×b3 5.S×b3 Sf5 6.Sd2 Kg7 7.Sf3 Kf6 8.Kg4=; 2.– g2 3.Kh2 Sh4!? 4.Le4! L×e2 5.L×g2 d3 (5.– Sf5 6.Le4 La6 7.Kg2=) 6.Ld5+ Kg7 7.S×d6=

c) 3.K×g3? Sf5+ 4.Kf4 S×d4 5.Ke5 Lf7! 6.Kd6 c4 7.Kc5 Sf5 ≠

d) 3.– g2 4.Kh2 Sf5 5.Lc2! Se3 6.La4 Sf1+ 7.Kg1 Sg3 8.Lb5 =

e) 5.– g2 6.c7! g1=D 7.c8=D+ Kh7 8.Dc7+ Kg6 (8.– Sg7 9.Lg4=) 9.Lh5+! K×h5 [f] 10.Dh7+ Kg5 11.Dh6+ =

f) 9.– Kh6 10.Df4+ Kh7 11.Dc7+ Sg7 12.Lg4=; 9.– Kg5 10.Dd8+ Kf4 11.Dc7+ Ke3 12.Dc3+ Ld3 13.De5+ Kd2 14.Da5+ =

g) 8.– Sd6 9.Ld5+ =

h) 10.Kf3? Lb5 ≠

D/55

1.Se3 f2+ [a] 2.Kg3 f1=S+! [b] 3.S×f1 Td3+ 4.Kh4 [c] Th3+! 5.K×h3 Lg4+ 6.Kh4! [d] **d1=D** 7.**Td5!** [e] D×f1 [f] 8.L×e4+ **Lf3** [g] 9.**Td1!** D×d1 10.L×f3+ D×f3 stalemate

Twofold consecutive theme rendition.

a) 1.– Le2 2.L×e4 Kh2 3.L×f3 Td4+ 4.Kf5 L×f3 5.Sf1+ Kg2 6.S×d2 T×d2 7.Ta6; 1.– Lc2 2.Ta1+; 1.– Kh2 2.S×d1 f2 3.Tf5

b) 2.– Kg1 3.Ta1 f1=D 4.S×f1 Td3+ 5.Kf4 Tf3+ 6.K×e4

c) 4.Kf4? Tf3+ 5.Ke5 T×f1 6.L×e4+ Kh2 7.Td5 Tf2

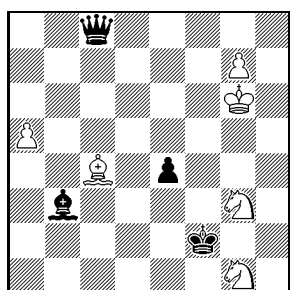
- d) 6.Kg3? d1=D 7.L×e4+ Kg1 8.Se3 De1+ 9.K×g4 D×a5
 e) 7.L×e4+? Kg1 8.Td5 De1+ 9.Sg3 Le2! 10.Kh3 Lf1+! 11.Kg4 Lg2
 f) 7.– D×d5 8.L×e4+ D×e4 9.Sg3+
 g) 8.– Kh2 9.K×g4 Dh3+ 10.Kf4 Dg3+ 11.Kf5 Dg5+ 12.Ke6 Dg4+ 13.Lf5 D×h5 14.Td3

D/56

1.Se5! [a] **Sd3** [b] **2.Lb6!** Ld2+ 3.Kf5 T×b6 4.Sd7+ K×f7 5.S×b6 Lf4 6.Sd7 Lc7 [c] 7.e5 Sf4! [d] 8.K×f4 Ke8 [e] 9.K×g4! [f] K×d7 10.K×h3 L×e5 11.Kg4 Ke6 12.Kg5! L×f6+ 13.Kg6 Le5 14.h5 Kd7 15.Kf5! ±

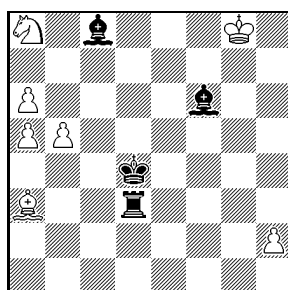
- a) 1.Lc5+? K×f7 2.Se5+ Ke6 3.f7 Ld8+ 4.K×f4 Le7 5.L×e7 K×e7 ≠
 b) 1.– Se6+ 2.Kf5 T×b7 3.K×e6 ±
 c) 6.– Sc5 7.e5! ±
 d) 7.– Sc5 8.S×c5 h2 9.e6+ ±
 e) 8.– h2 9.Kf5 h1=D 10.e6+ Kg8 11.f7+ Kh7 12.f8=D Df3+ 13.Kg5 D×f8 14.S×f8+ Kg7 15.K×g4 ±
 f) 9.f7+? K×f7 10.Kg3 a5 11.b8=D L×b8 12.S×b8 a4 =; 9.Sc5? h2 10.S×a6 Lb8! 11.S×b8 h1=D 12.Sc6 Dc1+! =

D/57



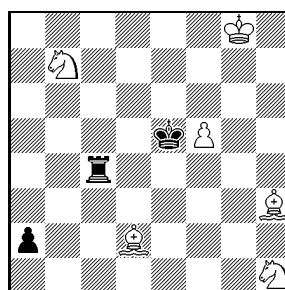
Win 6+4

D/58



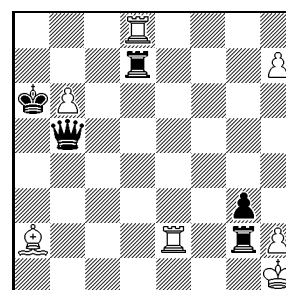
Win 7+4

D/59



Draw 6+3

D/60



Draw 7+5

D/57

1.g8=D! [a] and now two main variations: 1.– D×g8+ (A) and 1.– D×c4 (B)
 (A) First variation: 1.– D×g8 2.L×g8 L×g8 3.S×e4+ [b] **Ke3** 4.**Se2!** [c] K×e4 [d] 5.a6 Ke5 6.Sc3 Ld5 7.S×d5 K×d5 8.a7 ±
 (B) Second variation: 1.– D×c4 2.D×c4 L×c4 3.S×e4+ **Ke3** 4.**Sf3!** [e] K×e4 (4.– Ld5 5.Sfd2!) 5.Sd2+ Kd5 6.S×c4 K×c4 7.a6 ±

- a) 1.S×e4+? Ke3! 2.g8=D (2.L×b3 De8+ 3.Kf6 Dd8+ 4.Kg6 De8+ 5.Kh6 Dc6+ 6.Kg5 Db5+ 7.Kh4 D×b3 =) Dg4+! 3.Sg5 (3.Kf6 Df4+ 4.Kg7 Dg4+ =; 3.Kh6 Dh4+ 4.Kg7 Dg4+ =) Lc2+! 4.Kf7 Df5+! 5.Ke7 Dc5+! 6.Kd8 Dd6+! = perpetual check; 1.L×b3? Dg4+! =
 b) 3.S1e2? Lc4! =; 3.Kg7? Ld5! =; 3.a6? K×g3! =
 c) 4.Sf3? K×e4! =; 4.Sf6? Lc4! =; 4.a6? Lc4! (or 4.– Ld5 5.Sc3 Lc6! =) 5.a7 Ld3 =]
 d) 4.– K×e2 5.a6 (5.Kf6? Kd3! 6.Ke5 Kc4 7.a6 Ld5 8.Sd6+ Kc5 =) Kd3 (5.– Ld5 6.Sc3+) 6.Sf6! Le6 7.a7 ±
 e) 4.Sd6? e. g. 4.– La6 5.Kf6 Kd4 6.Sf3+ Kc5 7.Ke5 Kb4 =

D/58

1.Lb2+ Kc5 2.L×f6 K×b5 3.Sc7+ [a] K×a5 4.a7 Lb7 5.a8=D+ L×a8 6.S×a8 Th3 [c] 7.Le5 **Te3** 8.**Sb6!** Kb5 [d] 9.Sd7! [e] Kc6 10.Lf4! [f] Te4 11.Se5+! Kd5 12.Sg6 ±

- a) 3.a7? Ka6 4.Sb6 [b] Le6+ 5.Kg7 K×a7 =
 b) 4.Ld4 T×d4 5.Sc7+ K×a7 6.Sb5+ Ka6 7.S×d4 K×a5 =
 c) 6.– Kb5 7.Sc7+ Kc6 8.Le5
 d) 8.– K×b6 9.Ld4+ Kc6 10.L×e3; 8.– T×e5 9.Sc4+ Kb4 10.S×e5 ±

- e) 9.Lc7? Tc3=; 9.Ld4? Th3 10.Lg1 T×h2 =
 f) 10.Sb8+? Kd5 11.Lg3 [g] T×g3+ 12.h×g3 Ke4=
 g) 11.Lc7 Tc3 12.Lf4 Tc4 13.Lg3 Tg4+ 14.Kf7 T×g3 15.h×g3 Ke4

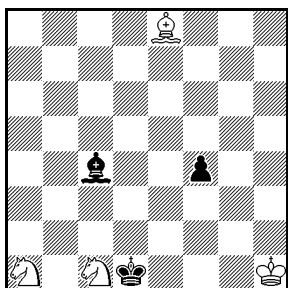
D/59

- 1.Lh6! [a] Tc8+ 2.Kh7 [e] Tc7+ 3.Lg7+ T×g7+ [f] 4.K×g7 a1=D 5.Sf2 with two thematic lines:
5.– Dd4 6.Sc5! Kd5+ 7.f6 =
 5.– Dg1+ 6.Sg4+ K×f5 7.Sc5 **Dg3 [g]** **8.Sd3! D×h3 [h]** 9.Sh6+ Kg5 [i] 10.Sf7+ Kh4 [j] 11.Sde5 De6,Df5 12.Sg6+ =
- a) Try: 1.Sd8!? a1=D! [b] 2.Sf7+ Kd5! [c] 3.Lg2+ Kd4 4.Sg3 [d] Tc8+ 5.Kg7 Kd3+ 6.f6 K×d2 ±; 1.Sa5!? Tc8+ 2.Kg7 a1=D ±
- b) 1.– Tc8!? 2.Kg7 a1=D 3.Sf7+ Kd5+ 4.f6 Dg1+ 5.Sg5 Td8 6.Lf4 D×h1 7.f7 Da1+ 8.Kg6 =
- c) 2.– Kd4!? 3.f6 Kd5 4.Kg7 D×h1 5.Sg5 Th4 6.f7 Da1+ 7.Kg6 Dh8 8.Lg2+ Kd6 9.Se4+ =
- d) 4.Lh6 Tc8+ 5.Kh7 Da2 6.Lg7+ Kc5 ±
- e) 2.Kf7!? Tc7+ 3.Kg6 a1=D 4.Sf2 Da6+ 5.Kg5 Df6+ ±
- f) 3.– Kf4 4.Sd8 a1=D 5.Se6+ Kf3 6.S×c7 D×h1 7.f6 =
- g) 7.– D×c5 8.Sf2+ Kg5 9.Se4+ =; 8.– Kf4 9.Sd2+ =; 8.– Ke5 9.Sd3+ =
- h) 8.– D×d3 9.Sf2+ =
- i) 9.– Ke4 10.Sf2+ =; 9.– Ke6 10.Sf4+ =
- j) 10.– Kg4 11.Sf2+ =

D/60

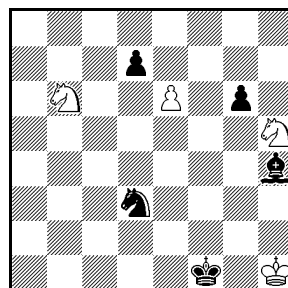
- 1.Ta8+? Kb7 2.Tb8+ K×b8 3.h8=D+ Kb7 ±
 1.h8=D T×h2+ [a] 2.D×h2 g×h2 [b] 3.Lc4! [c] D×c4 4.Ta2+ [d] Kb5 5.Tb2+! [e] Ka6 6.Ta2+ [f] K×b6 7.Tb2+ **Kc7 8.Tc2!** Td1+ 9.T×d1 D×c2 10.Td7+ Kc8 11.Td8+ K×d8 stalemate
- a) 1.– T×d8 2.Lc4 T×h8 3.L×b5+ =; 1.– D×e2 2.Lc4+; 1.– T×e2 2.Ta8+ K×b6 3.Tb8+ Ka7 4.Ta8+ =
- b) 2.– Dc6+ 3.Dg2 Dc1+ 4.Dg1 =; 2.– T×d8 3.D×g3 Dh5+ 4.Kg1 =
- c) 3.T×d7? D×e2! 4.Tg7 De1+ 5.K×h2 De5+ 6.Tg3 Dh8+! ±; 4.b7 Ka7 5.Tf7 (5.Ld5 De1+ 6.K×h2 Dh4+ 7.K~ Dg4+ ±) D×a2 ±; 3.Ta8+? Kb7 4.Ta7+ K×b6 5.T×d7 D×e2 ±
- d) 4.T×d7? D×e2 5.b7 Ka7 ±
- e) 5.T×d7? Dc6+! 6.K×h2 D×d7 ±
- f) 6.Ta8+? Kb7 7.Ta7+ Kc6 8.T×d7 Dc1+ 9.K×h2 D×b2+ ±; 6.T×d7? Dc1+ 7.Td1 D×b2+ ±

D/61



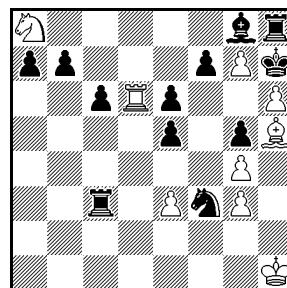
Win 4+3

D/62



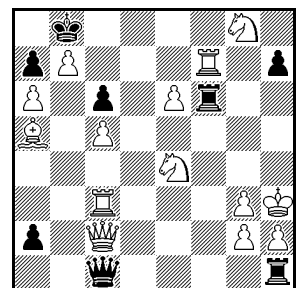
Draw 4+5

D/63



Win 9+12

D/64



Win, Black to move 14+8

D/61

- 1.Sc3 f3 2.Kg1 [a] f2+ [b] 3.K×f2 Lf7 4.Lc6! [c] Ld5 5.La4! [d] **Lc6 6.Sc2 K×c2 7.Sd4+ ±**
 6.– L×a4 7.Se3#! pure mate

- a) 2.Lh5? Le2! (If 2.– Ld5 3.Kh2! (3.Kg1?) L×b3 4.S×b3 Ke1 5.L×f3 stalemate) 3.Sd4 Kd2 4.Sab3+ Kc3=
 b) 2.– Lf7 3.L×f7? f2+ 4.Kg2 f1=D+ 5.D×f1 stalemate; 2.– Ke1 3.Sc2+ Kd1 5.Sbd4! ±
 c) Unique winning move: 4.Kb5? Lc4 5.La4 Lb5 6.Sc2 K×c2 7.Sd4+ Kc3 8.S×b5+ Kb4 =
 d) 5.Lb5? Lc4 6.La4 Lb5 7.Sc2 K×c2 8.Sd4+ Kc3 9.S×b5+ Kb4 =

D/62

1.e7! [a)] L×e7 [b)] 2.Sg3+ [c)] Kf2 3.Se4+ Ke3! [d)] 4.Sc3 Kd4 5.Se2+ Kc5! [e)] 6.S×d7+ **Kc6!** [f)] **7.Sc1!** [g)] S×c1 8.Se5+ with 9.S×g6 =

- a) 1.Sg7? Lg3 with 2.– Sf2#
 b) 1.– g×h5 2.e8=D,T Lg3 3.D,Tf8+ =]
 c) 2.Sg7? Ld6 ±
 d) 3.– Kf3 4.Sd2+ Ke2 (4.– Ke3? 5.Sb3! Sf4 6.S×d7 =) 5.Sdc4! d6 (5.– Sc5? 6.Se5 d6 7.S×g6 =) 6.Sc8 d5 7.S4b6 =
 e) 5.– Ke3? 6.Sc3
 f) 6.– Kd6? 7.Sb6 =
 g) 7.Sb8+? Kb7 8.Sd4! (8.Sd7? Kc7) Se5 ±

D/63

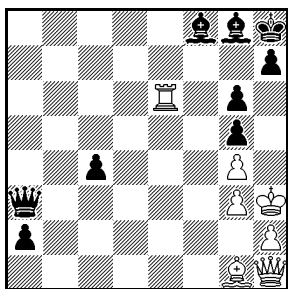
1.Kg2! Td3! [a)] 2.Sc7! [b)] T×d6 3.Se8 Td2+ 4.K×f3! [c)] e4+ 5.K×e4 Tf2 6.Kd3 e5 7.e4 b5 8.Ke3 Tf1 9.Ke2! ± (e. g., 9.– f6 10.Lg6+ K×g6 11.g×h8=D)

- a) 1.– e4 2.Sc7 Tc2+ 3.Kf1 Se5 4.Se8 Tc1+ 5.Ke2 Tc2+ 6.Ke1 Tc1+ 7.Kd2 Tf1 8.Ke2 Tf3 9.Td4 Sg6 10.T×e4 K×h6 11.L×g6/g×h8=D ±
 b) 2.T×d3? Se1+ 3.Kf1 S×d3 4.Sc7 Sc5 5.Se8 Sd7 6.Sc7 Sc5: White repetition of moves
 c) 4.Kf1 Sh2+ 5.Ke1/Kg1 Sf3+ 6.Kf1: Black repetition of moves

D/64

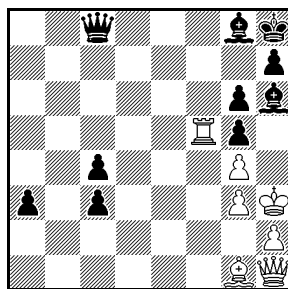
1.– T×h2+ 2.K×h2 Th6+ 3.S×h6 Dh1+ 4.K×h1 **a1=D+ 5.Db1 D×b1+ 6.Tc1 D×c1+ 7.Le1 D×e1+ 8.Tf1 D×f1+ 9.Kh2 De2 10.Sf6 D×e6 11.Shg4 Kc7 12.Se5 ±**

D/65



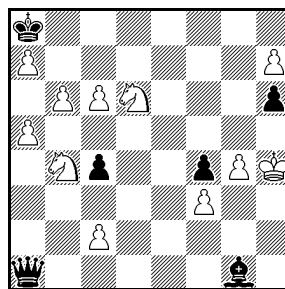
Draw 7+9

D/66



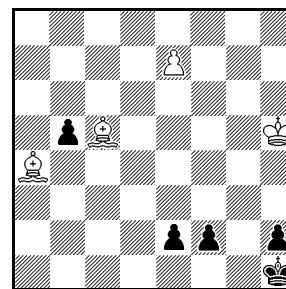
Draw 7+10

D/67



Win, Black to move 11+6

D/68



Win 4+5

D/65

1.Ld4+ **Lg7 2.Ta6 Df8** [a)] 3.Da1 c3 4.Ta8 **Df3** [b)] **5.Dh1!** D×h1 6.L×g7+ K×g7 7.T×g8+ K×g8 stalemate [c)]

- a) 2.– D×a6 3.L×g7+ K×g7 4.Db7+ D×b7 stalemate
 b) 4.– D×a8 5.L×g7+ K×g7 6.D×c3+ Kf8 7.Dg7+ K×g7 stalemate
 c) 7.– Kf7 8.perpetual checks, but White must be careful to give the right checks so that
 1. the queen does not intervene (except for capture on the diagonal) and
 2. the king does not seek shelter behind pawn a2 (the rook must be able to capture on a2)

D/66

1.Ld4+ **Lg7** 2.**Da8** L×d4 [a] 3.D×c8 g×f5 4.Dd8 f×g4+ 5.K×g4 Lg7 6.Da8 c2 7.D×a3 h6 and now Black can protect the pawns but not promote a c-pawn.

a) 2.– D×a8 (2.– Dd7? and White wins) 3.L×g7+ K×g7 4.Tf7+ Kh8 5.T×h7+ L×h7 stalemate

D/67

1.– L×b6! [a] 2.h8=D [b] D×h8 3.a×b6 Dd8+! [c] 4.Kh3 D×b6 [d] **5.c7!** [e] **D×c7** 6.Sb5 **Db7!** **7.Sd5!** reciprocal theme [f] D×b5 8.Sc7+ K×a7 9.S×b5 ±

a) 1.– Lf2+ 2.Kh5 De5+ 3.Sf5 Df6 4.h8=D D×h8 5.c7 Lc5 6.Sd5 Kb7 7.Kh4 De8 8.Kh3 h5 9.Sde7 h×g4 10.Kg2 f×g3 11.Kf1 ±

b) 2.g5 Lf2+ 3.Kh5 Dg7 4.g×h6 De5+ 5.Kg4 De6 6.Kh5 De5=

c) 3.– Da1 4.g5 Dh1 5.Kg4 Dg1+ 6.Kf5 D×b6 7.Ke6 h×g5 8.Kd7 D×b4 9.c7 ±

d) 4.– D×d6 5.c7 De6 6.Sd5 Dc6 7.Kh4 De8 8.c8=D D×c8 9.Sc7+ Kb7 10.Da8 D×a8 11.S×a8 ±

e) 5.Kg2 De3 6.c7 De2+ 7.Kg1 De1+ 8.Kg2 De2+ =

f) **7.Sa6!?** reciprocal theme D×f3 8.Kh2 Df2+ 9.Kh1 Dh4+ 10.Kg1 D×g4+ 11.Kf1 Df3 =

D/68

1.e8=D [a] e1=D [b] 2.Da8+! [c] Kg1 3.Dg8+ Kh1 [d] 4.Dd5+ Kg1 5.Dg5+ Kh1 6.L×b5 Dd1+!? [e] 7.Kh4! [f] and now (A) 7.– Df3 8.Dc1+ **f1=D** **9.Lc6** or (B) 7.– f1=D 8.Lc6+ **Ddf3** **9.Dc1** or (C) **8.– Dff3** **9.Dc1** D×c6 [g] 10.D×d1+ Kg2 11.De2+ Kh1 12.Df1#

a) 1.L×f2? Kg2 2.e8=D h1=D+ 3.Lh4 e1=D 4.Dc6+ Kh2 5.Dd6+ Kg2 6.Dd5+ Kh2

b) 1.– f1=D 2.De4+ Dg2 3.Lc2 b4 4.Kh4 b3 5.Ld3 b2 6.Lb1; 1.– Kg2 2.De4+ Kg1 (2.– Kg3 3.Dg4#; 2.– Kf1 3.Dh1#) 3.Dg4+ Kf1 4.Dh3+ Ke1 5.Lb4#

c) 2.Dc6+? Kg1 3.Dg6+ Kh1 4.L×b5 De5+! So White has to choose another checking system.

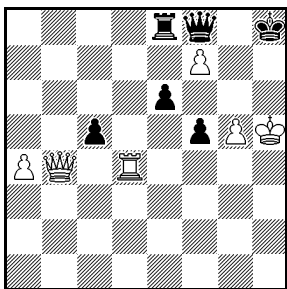
d) 3.– Kf1 4.L×b5+ De2+ 5.L×e2+ K×e2 6.Dc4+ Kd2 7.Df1

e) guarding f3; 6.– f1=D 7.Lc6+

f) 7.Kh6 f1=D 8.Lc6+ Ddf3 9.Dc1?! D×c6+

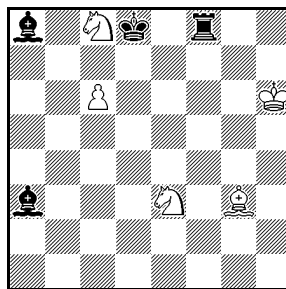
g) 9.– Kg2 10.D×d1 D×c6 [h] 11.De2+ Kh1 12.Df1#

h) 10.– h1=D+ 11.D×h1+ K×h1 12.L×f3+

D/69

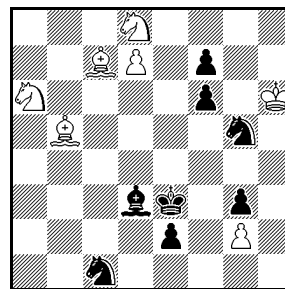
Win

6+6

D/70

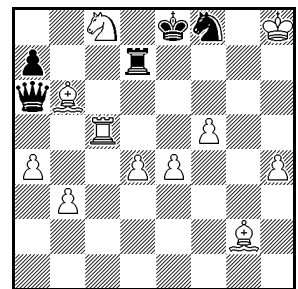
Draw

5+4

D/71

Win

7+8

D/72

Win

11+5

D/69

1.Db7 [a] **Te7** [b] **2.Td8!** [c] and:

2.– D×d8 3.Db2+ e5 4.Db6! D×b6 5.f8=D+ Kh7 6.D×e7+ ±

2.– T×b7 3.T×f8+ Kg7 4.Th8! T×f7 5.g6! ±

Doubled sacrifices of white queen and white rook.

a) 1.D×c5? Df7! 2.g6 Db7!; 1.Th4? Kg7!; 1.Db5? Tb8!

b) 1.– Tb8 2.Dc7! ±

c) 2.Td7? Kg7

D/70

1.Sa7! [a] Th8+ [b] 2.Kg5! [c] Tg8+ 3.Kh4 Le7+ 4.Kh3 Th8+ 5.Kg4! Tg8+ 6.Kh3 T×g3+ 7.K×g3 Lc5! 8.c7+! K×c7 9.Sb5+ **Kc6** [d] **10.Sd5!** K×b5 [e] 11.Sdc7+ K~ 12.S×a8 =

Delayed „double“ thematic sacrifice: on the 10th move, when wSb5 has come under black king's attack, the 2nd wS is placed under black king's attack, in view of black bishop being interfered with: 10.Sd5!

a) 1.Sc4? Tf6+! 2.Kg7 T×c6 3.S×a3 K×c8

b) 1.– Lc5 2.c7+ K~ 3.c8=D =

c) 2.Kg7? Lb2+! 3.Kf7 Th7+ or 3.Kg6 Tg8+ 4.K~ T×g3

d) 9.– Kb6 10.Sa3 L×a3 (10.– L×e3 11.Sc4+ K~ 12.S×e3 =) 11.Sc4+ K~ 12.S×a3 =

e) 10.– K×d5 11.Sbc7+ K~ 12.S×a8 =

D/71

1.Lb6+! [a] Kf4! [b] 2.La5 L×b5 **3.Sc6!** Se6 **4.Sc7** [c] **Sd8!** 5.S×b5 [d] **S×c6** [f] **6.Sd4!** Sb3! [g] 7.S×b3! [h] S×a5 [i] 8.d8=D e1=D 9.D×f6+ Ke3 [j] 10.Df3#!

a) 1.L×g3? L×b5 2.Sc6 Se6; 1.La5? L×b5 2.Sc6 Se6

b) 1.– Ke4 2.Sc5+ Kf4 3.La5 L×b5 4.Sc6 ±

c) 4.Sc5? Sd8 5.S×d8 L×d7 6.Ld2+ Kg4 7.S×d7 Sd3 8.S×f6+ Kf5 9.Sh5 e1=D 10.L×e1 S×e1 11.S×g3+ Kg4 12.Se2 S×g2 =

d) 5.Sd5+ Kf5 6.Sd4+ [e] Ke5 7.S×b5 K×d5 8.L×d8 e1=D 9.L×f6 Kc6 10.d8=D K×b5 =

e) 6.S×d8 L×d7 7.Se3+ Ke4 8.Sc2 Sd3 9.S×f7 Sf4 10.Se1 Lc6 11.Sd6+ Ke3 =

f) 5.– e1=D 6.L×e1 S×c6 7.Ld2+ Ke5 8.L×c1 Ke6 9.Sd4+ K×d7 10.S×c6 K×c6 11.Kg7 Kd5 12.K×f7 f5 13.Kf6 Ke4 14.Kg5 Kd3 15.K×f5 Ke2 16.Kg4 Kf2 17.Kh3 ±

g) 6.– e1=D 7.L×e1 Sd8 8.La5 Sb7 9.Ld2+ Ke4 10.Sb5 Sb3 11.Sd6+ ±; 6.– S×a5 7.S×e2+ S×e2 8.d8=D ±

h) 7.S×c6? S×a5 8.d8=D e1=D 9.D×f6+ Ke3 10.Df3+ Kd2! =

i) 7.– Ke5 8.Le1 Kd6 9.Sd4 K×d7 10.S×c6 K×c6 11.Kg7 f5 12.L×g3 f4 13.Lf2 Kd5 14.K×f7 Ke5 15.Kg6 Ke6 16.Kg5 Ke5 17.Kg4 Ke4 18.Le1 Ke3 19.Lh4 Ke4 20.Lf2 ±

j) 9.– Ke4 10.De7+ ±; 9.– Kg4 10.Dg5#

D/72

1.Te5+ Kf7 2.Te7+ T×e7 [a] 3.Sd6+ Kf6 4.e5+ T×e5 5.d×e5+ **K×e5** [b] **6.Lf1** D×f1 [c] 7.Sc4+ D×c4 [d] 8.b×c4 a×b6 9.Kg7 Sd7 10.h5 K×f5 11.h6 Sf6 12.a5 b×a5 13.c5 a4 14.c6 a3 15.c7 Se8+ [e] 16.Kf8,Kg8 S×c7 17.h7 a2 18.h8=D ±

a) 2.– Kf6 3.e5+ K×f5 4.Lh3+ Kf4 5.L×d7 S×d7 6.T×d7 D×c8+ 7.Td8 Dg4 8.Tf8+ followed by Ld8 (guards h4) and White is winning. Finally he will direct a pawn to the eighth row. The king has sufficient protection.

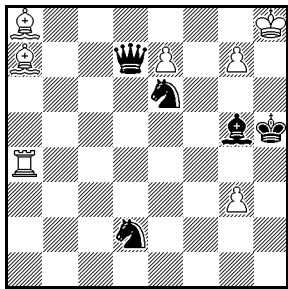
b) 5.– Ke7 6.Le3 De2 7.Lg5+ Kd7 8.Le4 Dh5+ 9.Kg7 Dh7+ 10.K×f8 Dh8+ 11.Kf7 Dh7+ 12.Kf6 Dh8+ 13.Kg6 Dg8+ 14.Kh5 Dh8+ 15.Kg4 D×e5 16.Lf4 Dg7+ 17.Kh3 Dc3+ 18. Lg3 D×b3 19.f6 ± Or 8.– Kc7 (evacuating a flight for the knight) 9.Se8+! Kb8 10.Sf6 (dominating the knight) Df2 11.Kg7 Dc5 12.Kf7 ±

c) Black has to capture the bishop: 6.– D×b6?? 7.Sc4+; 6.– Sg6+ 7.Kg7! D×f1 8.Sc4+ is not as good for Black as the text move.

d) 7.– Kf4 8.Lc7+ followed by knight fork; 7.– Kf6 8.Ld8+ Kf7 9.Sd6#!

e) 15.– a2 16.c8=D+

D/73



Draw 7+5

D/73

1.Th4+! [a] L×h4 [b] 2.g4+! [c] Kh6 [d] 3.Le3+ [e] Lg5 [f] 4.Lc6! [g] D×c6 [h] 5.L×g5+ [i] S×g5 [j] 6.e8=D! [k] D×e8+ 7.g8=S+! [l] with three main variants:

7.– D×g8+ 8.K×g8 Kg6 [m] 9.Kf8 [n] Kf6 [o] 10.Ke8= [p] draw according to Troitzky

8.– Sde4,Sc4 9.Kf8 [q] Sd6 [r] 10.Ke7= [s] draw according to Troitzky

7.– Kg6 stalemate

a) 1.g4+ Kh6 2.g8=D (2.g8=S+ Kg6 ♯) Lf6+ ♯; 1.g8=D? Lf6+ 2.Kh7 D×e7+ ♯; 1.Lc6? D×e7 2.Th4+ (2.g4+ Kh4 3.Lf2+ — 3.g8=D Df6+ ♯ — Kh3 4.Ta7 — 4.g8=D Df6+ ♯ — Df6 ♯; 2.g8=D Df6+ ♯; 2.– L×h4 3.g4+ — 3.g8=D Df6+ ♯ — K×g4 4.g8=D+ Lg5 ♯

b) 1.– Kg6? 2.g8=D+ ±

c) 2.g×h4? D×e7 3.g8=D Df6+ 4.Kh7 Dh6#; 2.g8=D? Lf6+ 3.Kh7 D×e7+ ♯; 2.Lc6? D×e7 3.g4+ — 3.g8=D Df6+ ♯ — Kg6 4.g8=D+ Kh6 ♯

d) 2.– K×g4 3.g8=D+ Kf5 4.Dh7+ Ke5 5.Dh5+ Kd6 6.e8=S+ =, but not 6.e8=D? Dg7#); 2.– Kg5,Kg6? 3.g8=D+ ±

e) 3.Lc6? D×a7 (3.– D×c6? 4.Le3+ = see main line) 4.g8=D — 4.e8=S Lf6 ♯; 4.g8=S+ Kg5 ♯, but not 4.– Kg6? 5.e8=D+ = — Dd4+ ♯; 3.g8=D? Lf6+ ♯; 3.g8=S+? Kg6 ♯

f) 3.– Sg5 4.Lc6 (4.g8=D? D×e7 ♯) D×c6 5.L×g5+ (5.g8=D? Df6+ ♯) L×g5 6.g8=S+ (6.g8=D? Df6+ ♯) 6.Kg6 7.e8=D,L+ (7.e8=T? Dh1+ ♯; 7.e8=S? Dd7 ♯) D×e8 stalemate; 3.– Kg6? 4.g8=D+ ±

g) 4.g8=D? D×e7 ♯; 4.Ld5? L×e3 ♯, but not 4.– D×d5? 5.g8=S+ Kg6 6.e8=D#

h) 4.– L×e3 5.g8=S+ (5.g8=D? Dd4+ ♯) Kg6 6.L×d7=; 4.– D×e7 5.g8=S+ =, but not 5.g8=D? Df6+ ♯

i) 5.g8=D? Dc3+ ♯; 5.g8=S+? Kg6 6.L×g5 Dh1+ 7.Lh6 Da1+ ♯; 5.e8=D? D×e8+ 6.g8=S+ (6.g8=D De7 ♯) Kg6 7.L×g5 Kf7 ♯

j) 5.– K×g5? 6.g8=D+ Kh4 (6.– Kf4 7.Df7+ Ke5 8.e8=D ±) 7.e8=D Dc3+ 8.Kh7 Se4 9.Dh8 S4g5+ 10.Kg6+ D×h8 11.D×h8+ K×g4 12.Dh5+ ±

k) 6.g8=D? Df6+ ♯; 6.g8=S+? Kg6 7.e8=D+ Sf7+ ♯, but not 7.– D×e8? stalemate; 6.e8=T,S? Sf7+ 7.Kg8 D×e8#; 6.e8=L? Df6 ♯

l) 7.g8=D? Sf7#

m) 8.– Sdf3,Sb3 9.Kf8=, but not 9.Kh8? Sd4 ♯

n) 9.Kh8? Sde4 ♯

o) 9.– Sde4 10.Ke7,Ke8=, but not 10.Kg8? Sd6 ♯

p) 10.Kg8? Sde4 ♯

q) 9.Kh8? Sc5 ♯

r) 9.– Kg6 10.Ke7,Ke8=, but not 10.Kg8? Sd6 ♯

s) 10.Kg8? Kg6 ♯